



JOURNAL

**JUNE 2013
ISSUE # 123**

PUBLISHED BY FEDERATION OF RAIL ORGANISATIONS NZ INC : P O BOX 140, DUNEDIN 9054

PLEASE SEND CONTRIBUTIONS TO EDITOR BY E-MAIL : patsy.scott@xtra.co.nz

IN THIS ISSUE

FRONZ Awards	2-5	CSX 888 Locomotive	7
Social Media	6	Rural Women Aotearoa News	8-10
Heritage Stock Covenants	7	News From Our Members	11
Christchurch Heritage Grants	7	Members Classifieds	13
British Steam Coal Crisis	7	Photo of the Month	14

OAMARU CONFERENCE SPECIAL

This month we have a bumper issue celebrating the FRONZ 2013 Conference held in Oamaru over Queens Birthday weekend. Those of us lucky enough to enjoy all of the activities had a great weekend. Also a number of presentations were informative and entertaining ranging from the rail history of the North Otago area to the most up to date information on electronic social media.

A fascinating tour of the formation of the Ngapara Branch, thanks to tour guide Arthur DeMaine.

Seeing K88 for the first time in the flesh was a personal favourite among many highlights. What a mighty locomotive.

On the following pages there is a full illustrated list of our awards winners. Also a summary of Mike Anderson's Social Media presentation.

It was good to see a number of news items in local newspapers in Timaru and Oamaru covering some of our conference activities.



Well-chuffed to meet at conference

Oamaru Mail photographer **Carol Edwards** took these pictures at the weekend's Federation of Rail Organisations of New Zealand (FRONZ) conference held at Oamaru Opera House.



*Some images from the Timaru Herald
and Oamaru Mail*

Fronz awards 2013

The full list of FRONZ awards presented at the 2013 Awards Dinner in Oamaru.



2011 KIWIRAIL INFRASTRUCTURE AWARD

**Oamaru Steam And Rail Society For Hum-
ber Street Railway Crossing**



**RAIL HERITAGE TRUST
OF NEW ZEALAND**

NZ RAIL HERITAGE TRUST AWARDS

Pleasant Point Railway Gangers Hut



Plains Railway got a story in the Timaru Herald about the award. See

<http://www.stuff.co.nz/timaru-herald/news/8761333/Rail-Heritage-award-for-refurbished-hut>

**Certificate of Merit to Scott & Dara
Graham
For The Restoration Of Bridge No. 2
on the Raetihi Branch**



Fronz awards 2013—Continued



SHANTYTOWN STEAM SCHOOL

LOCOMOTIVE RESTORATION AWARD

Oamaru Steam And Rail Society For The Restoration Of Hudswell Clark No 1542, B 10.



**KIWIRAIL MECHANICAL DIESEL
LOCOMOTIVE RESTORATION
AWARD**

Goldfields Railway

**For The Restoration of
A&G Price No. 151 NZRAF Rail
Tractor**

**FREIGHT WAGON
AWARD**

**Silver Stream Railway
for The restoration Of
NZR Wooden 'Highsider
Wagon' L4246**



Fronz awards 2013—Continued



THE TAIERI GORGE RAILWAY.

Passenger Vehicle
Restoration Award

Nelson Railway Society
For The Restoration
of

NZR 44ft 'turtleback'
carriage A173

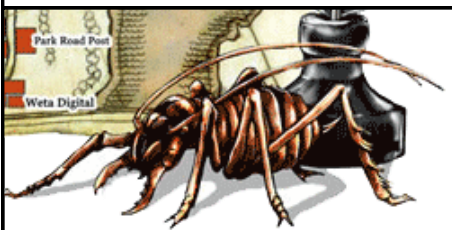


MOTAT SOCIETY TRAMWAY RESTORATION AWARD



Tramway Historical Society
for
The Restoration of
Invercargill Corporation Tramways

Birney Tram No. 15



THE WETA WORKSHOP AWARD FOR CREATIVITY AND IMAGINATION

Gisborne City Vintage Rail for
Resuming Operations



Fronz awards 2013—Continued

PAUL HEIGHTON AWARD FOR EXCELLENCE

Peter Mc Callum

**For Service As Secretary and In Technical And Engineering Roles
To FRONZ For Many Years**



HE AON YOUNG ACHIEVER AWARD

Is Awarded to

James Gobbe

Of Canterbury Railway Society



A very special thanks from the FRONZ Executive and all FRONZ members to our prize sponsors who have once again made monetary gifts to be included with the trophies.

Thank you to **Kiwirail**

AON Insurance

MOTAT Society

Shanty Steam School and Tai Poutini Polytech

NZ Rail Heritage Trust

And our Conference Sponsors. Their sponsorship keeps our costs down.

NZTA

Dept. Of Conservation

NZ Rail Heritage Trust

SOCIAL MEDIA AND YOUR ORGANISATION

At Conference Mike Anderson from Diesel Traction Group gave a fascinating presentation on how we can use Social Media to benefit our organisation. As promised here is the text from his presentation including a number of links to sites that may be of use.

Mike is happy to be contacted by e-mail at mikeanz5@gmail.com if you have any questions.

Google Alerts

What is the world saying about you?

Google Alerts

www.google.com/alerts

Type in key words, use quotation marks. Send results to your email address.



Facebook

If Facebook were a country it would be the third largest country in the world with over 500 million members. That makes it smaller than China and India but bigger than the USA.

"Websites are so last decade" and have been superseded by Facebook

Get the basics right

- PAGE not a GROUP
- PAGE not a fake person
- Test is... 'friends with' or 'likes'
- <https://www.facebook.com/pages>



Twitter

Twitter is an online social networking website and microblogging service that allows users to post and read text-based messages up to 140 characters known as "Tweets". Facebook can be linked to Twitter.

This is increasingly NOT about sitting at PCs but can be done from a Smart Phone.

It is good when things going well

It is great when things turn to crap

- Communication
- Media Relations
- Crisis Management
- Connect Feeds
- facebook.com/twitter



QR Codes

- Ticketing
- Posters
- In carriages
- On site

It takes 2 seconds to google "qr code generator"

Originally designed for industrial uses, QR codes have become common in consumer advertising. Typically, a smartphone is used as a QR-code scanner, displaying the code and converting it to some useful form (such as a standard URL for a website, thereby obviating the need for a user to type it manually into a web browser). QR Codes can be used to connect customers' smart phones and I-pads to your website to download your latest news.



Claim the space now

- We said this in the 1990s about websites
- Own your name

COVENANTS PROVIDING PROTECTION FOR FINITE HERITAGE STOCK

Covenants are catching the attention of owners wanting to seek protection for their properties and the NZHPT is helping to achieve this objective.

A property does not need to be an NZHPT-registered place to be covenanted, but it must meet the definition of a historic place, historic area, wahi tapu or wahi tapu area in the Historic Places Act 1993.

Heritage covenants bind successors and purchasers of the property to wishes of the current owners in agreement with the NZHPT.

There are a number of ways to obtain a heritage covenant. A property owner may approach the NZHPT to protect the heritage values of their property; as a condition of a resource consent application; archaeological authority or a court decision; or as part of a grant from the New Zealand National Heritage Preservation Incentive Fund.

The benefits of a heritage covenant are that the property has the greatest chance of continuing into the future in the manner an owner wishes.

Source New Zealand Historic Places Trust

CHRISTCHURCH HERITAGE INCENTIVE GRANT

Christchurch City Council's Heritage Incentive Grants Fund provides financial assistance to owners of heritage items listed in the Christchurch City Plan and Banks Peninsula District Plan.

Owners can also apply to the Canterbury Earthquake Heritage Buildings Fund Trust <http://www.savecanterburyheritage.org.nz> to assist in funding insurance shortfalls for earthquake-related repairs to listed and non-listed heritage and character buildings damaged in the Canterbury Earthquakes.

Source New Zealand Historic Places Trust

COAL CRISIS HITS STEAM TRAINS

The Telegraph, London, 28 May 2013

The country which brought the steam engine to the world is running out of coal to fuel them.

A fire at Daw Mill in Warwickshire and the collapse of Scottish Coal last month have left heritage train companies frantically scrambling for supplies as they prepare for the summer surge of tourists.

In all there are around 200 historic railway companies who attract millions of enthusiasts a year.

But while some have managed to secure coal for the next few months, others are in a parlous state especially as the coal shortage is likely to drive prices up.

"There are a lot of worried people out there," said Paul Lewin, a director of the Heritage Railway Association.

"Like any business, we need to know our source of supplies and materials are secure."

CSX 8888-"Crazy Eights"

This story reminded me of a local railfan favourite DC 4444 which has had a chequered life although has never been in a runaway. Ed.



The history of this locomotive is well documented and has been cited as the inspiration for the recently released movie "Unstoppable". Ever since its runaway journey across Ohio in 2001 it has affectionately been known as "Crazy Eights" and is among the most sought after locomotives on the CSX roster to see.

Unfortunately, the #8888 has been out of service since June 2009 and is in need of heavy repair. What future it has at this point in time is uncertain but the depressed economy without question influenced the decision to store it last year. With business now on the upswing, it remains to be seen if it is repaired and returned to active service.

On a wishful note, if the #8888 does return to service, it would be an added touch if "Crazy Eights" or "Unstoppable" could be added on the cab as in the manner of the "Spirit" locomotives. The runaway incident is one CSX would just as soon forget but this would be a positive spin from a negative incident.

Source West Virginia and North Carolina Rails <http://wvncrails.weebly.com/index.html>

ITEMS OF INTEREST FROM RURAL WOMEN BULLETIN AOTEAROA JUNE 2013

New Mining Safety Regulations

A recent discussion paper outlining new rules for the mining sector proposes significant changes to health and safety regulation. The proposals follow on from the findings of the Royal Commission on the Pike River Coal Mine Tragedy. They include:

- broadening the Royal Commission's recommendations about underground coal mines to cover all types of mining;
- a requirement that hazard management processes be set up for mining operations;
- tougher training and competency requirements for safety-critical roles in the mining industry;
- more worker participation in health and safety in mining operations; and
- improvements in emergency preparedness.

More is at :<http://www.dol.govt.nz/consultation/safe-mines/index.asp>

Pilot to Support Communities Losing a Major Industry

Communities that are particularly dependent on one employer or industry are particularly vulnerable if that employer or industry fails. Small towns can struggle to cope with the sudden fall in income and population, and the financial pressure and sense of loss can be traumatic for individuals and families, with sometimes tragic results.

A pilot is being set up that would see the Ministry of Social Development (MSD) partner with a small number of local communities to support them before and after the loss of a major employer or industry. Ultimately, the aim would be for a community to guide the response, with government agencies taking their cue from the community and working with it to support its vision and strategy."

More is at <http://www.beehive.govt.nz/release/dunne-pilot-support-communities-losing-major-industry>

Dealing With Prostate Cancer: New Plan

Prostate cancer is the most common cancer diagnosed in NZ. Every year, about 3000 men are diagnosed with the disease and more than 600 die from it. The Ministry of Health has been developing a prostate cancer action plan to ensure men have better access to quality information and care. The Prostate Cancer Awareness and Quality Improvement Programme (AQIP), amongst other things, aims to:

- ensure men have better access to consistent reliable information about prostate cancer;
- enable general practitioners (GPs) to effectively support men coming in for assessment of prostate cancer or prostate cancer risk;
- remove barriers that restrict the effective use of diagnostic and treatment services (while avoiding the complications caused by over-treatment); and
- make sure that all men have consistent care and fair outcomes across the health sector.

A national prostate cancer working group is to be established to guide the implementation of the programme.

More is at <http://www.health.govt.nz/publication/prostate-cancer-awareness-and-quality-improvement-programme-improving-outcomes-men-prostate-cancer>

Gumboot Safety This Winter

ACC notes that gumboots (and related activities) are a big source of injuries. So, it's put together a few suggestions for reducing the likelihood of gumboot-related injuries:

- don't rush – like a good wine, putting on and taking off gumboots can take time;
- wear something more sturdy if chopping firewood or using a chainsaw;
- take care on slippery ground – gumboots will keep the mud out, but they're not totally skid-resistant;
- shake your boots before putting them on, if you don't want to experience a "winter bite" of the spidery kind; and
- choose gumboots that are the right size, or you too could learn first-hand what it's like to experience "gumboot rub".

Denniston Plateau Mining Go-Ahead

The Conservation Minister has approved access over conservation estate land for Bathurst Resources to develop an open cast coal mine on the Denniston Plateau, above Westport. Bathurst first applied for an access agreement from the Department of Conservation in 2008. Resource consents for the Escarpment mine were granted in August 2011, but have been held up by appeals by the Royal Forest and Bird Protection Society of NZ and other groups who oppose further mining on the ecologically fragile plateau, which has also hosted coal mines since the mid-19th century. The outcome of these has yet to be determined. Bathurst is targeting high-grade coking coal, used in steel-making rather than being burnt. It has also committed to spend \$22 million on pest and predator control over 25,000 hectares of the nearby Heaphy River catchment in the Kahurangi National Park and 4,500 hectares on and around the Denniston Plateau, as well as funding historic projects on the plateau itself.

More is at <http://www.scoop.co.nz/stories/PA1305/S00474/denniston-coal-mine-gains-access-approval.htm>

ITEMS OF INTEREST FROM RURAL WOMEN BULLETIN AOTEAROA JUNE 2013—CONT'D

We Spend Most of Our Travel Time Driving

New Zealanders aged between 35 and 64 spend two thirds of their total travel time driving, the Ministry of Transport has found. The Ministry says that, on average, men drive just over 12,000 kilometres per driver a year, while women average just over 8,000 kilometres per driver a year.

The driver is the sole vehicle occupant in two thirds of trip legs. Work-related travel accounts for about one third of all household driving time and distance.

New Zealanders aged between 25 and 64 spend only about 10 percent of their total travel time walking. And they spend less than five percent of their total travel time on public transport. In comparison, people aged 5 to 24, and those aged over 65, spend about 15 percent of their travel time walking. Those aged 0-24 spend over 10 percent of their time using public transport.

More is at <http://www.transport.govt.nz/news/motivate/land/drivingstillapopulartravelchoice/>

Buses, Trains & Traffic Jams: Wellington vs Auckland vs NZ

While a big proportion of Wellingtonians use their city's bus and rail systems, it seems that most Aucklanders would rather drive, according to the latest Roy Morgan State of the Nation NZ report.

Almost half of Wellington's population (49.5%) caught a bus in any given three-month period during the last year, and 36.1% took the train. In Auckland, 38.9% of residents travelled by bus and 22.9% by train. Taxi usage is also higher in Wellington, with 29% of residents travelling by cab in an average three months (compared to 20.7% of Aucklanders). Unsurprisingly, Aucklanders drive more than Wellingtonians, racking up an average 14,000km per year (compared to 12,800km in Wellington). Though this greater mileage will come as no surprise to anyone who's experienced Auckland's congested traffic, that figure is lower than the rest of NZ, where the average distance driven per year is 14,600km.

More is at <http://www.scoop.co.nz/stories/BU1305/S00837/buses-trains-and-traffic-jams-wellington-vs-auckland-vs-nz.htm>

DOC's New Structure

The Department of Conservation is to have a new structure (which will take effect from September this year). The Department's current 11 Conservancy districts will go, and six new conservation delivery regions will take their place. As well, two distinct teams will be created across the country: one focused on delivering DOC's recreation, historic, and biodiversity field work; and the other working to develop new conservation initiatives in partnership with other organisations.

Details of the new structure and how it translates into local office teas can be found at <http://www.doc.govt.nz/docchanges>

Finding Funding Information Easily: New Partnership

Business and Community Shares (BACS) is entering into a partnership with the Funding Information Service (FIS) to deliver more accessible information for businesses, community organisations and individuals.

FIS provides services to groups and organisations involved in: sport, recreation, arts, faith, political, environment, conservation, education, health, employment, social and welfare activities. It works with a wide range of providers to make sure groups, organisations and individuals can easily access information about the best sources of funding.

BACS is a recently launched hub of corporate social responsibility that provides a base for businesses, community organisations and facilitators to share information and news. BACS has over 60 members and partners who share resources, skills and wisdom to create partnerships.

More is at <http://bacshares.org.nz/2013/05/bacs-announces-strategic-partnership-with-the-funding-information-service/>. The FIS website is at <http://www.fis.org.nz/> and the BACS website is at <http://bacshares.org.nz/>

When You First Join Twitter, Remember...

Here are eight helpful hints about using Twitter:

- don't start to follow others without having uploaded an avatar - you have one chance to make a first impression on Twitter and could lose that opportunity;
- enter a bio - having a Twitter Bio can get you up to eight times as many followers;
- enter your non-profit's website;
- remember that opting in to protect your tweets may communicate to your potential followers that you are fearful of Twitter and don't understand its primary purpose (which is to be public, open, engaging, and interesting);
- beware of using all CAPS - that's like screaming out loud and is generally not the done thing;
- remember that it might not be a good idea to follow too many others: it may be seen as indicating desperation, or worse, being a spammer;
- be wary about posting all marketing content (people get tired of just getting marketing material); and
- stay with it - don't quit Twitter too soon.

ITEMS OF INTEREST FROM RURAL WOMEN BULLETIN AOTEAROA JUNE 2013—CONT'D

More is at <http://nonprofitorgs.wordpress.com/2013/02/10/eight-common-mistakes-nonprofits-make-when-they-first-join-twitter/>

Helping SMEs Manage Hazardous Substances

The Environmental Protection Authority (EPA) has created a new multimedia “toolbox” to help small-and medium-sized businesses understand and manage the risks posed by hazardous substances such as paints, solvents, and liquid agricultural chemicals.

The toolbox includes:

- a guide to working safely with hazardous substances;
- an online calculator that allows businesses to enter a list of their hazardous substances and find out what key controls they need in place;
- posters reminding workers about the health impacts of being exposed to hazardous substances and the meaning of chemical labels;
- five animated safety videos designed to convey key safety messages to staff; and
- an emergency response plan template.

Each year around 500-800 NZers die due to industrial illness, many due to exposure to hazardous substances.

To order a free toolbox go to: www.hazardoussubstances.govt.nz/toolbox or phone 0800 376 234

New Rules & Certification for Electrical Work & Gasfitting

From July 2013 new guidelines for electrical work and gasfitting will come into force under the Gas (Safety and Measurement) Amendment Regulations 2012 and the Electricity (Safety) Amendment Regulations 2012. A guide explains the main changes and sets out what people need to do to prepare for them.

The guide is at <http://www.med.govt.nz/energysafety/about/publications/publications-for-industry/practitioner-guides-to-the-regulatory-changes-for-certification>

Update Software Regularly to Protect Against Viruses

NetSafe says it is essential that people keep their software up to date. By not updating just one piece of software, you could leave your entire system at risk of attack; cybercriminals only need one way into your system and from there they can do whatever they want.

NetSafe is also warning of the rise in what is known as “ransomware”, an attack designed to fool users into paying a “fine” to unlock their computer, often appearing to come from the Police (even using the NZ Police logo) or another official source.

Computer users who update their software regularly - including their operating systems - stand the best chance of defending their systems against this sort of attack. Operating systems include, for example, Microsoft Windows or Apple OS X, common helper programmes such as Adobe Reader, Java and Flash, and your web browser.

The five key messages for staying safe online that NetSafe is stressing are:

- use strong passwords;
- update everything;
- use a secure wireless network;
- back up your files; and
- think before you click.

The website www.securitycentral.org.nz is recommended as being good for useful advice on how to keep yourself safe online

NZ Smartphone Ownership Doubles in 12 Months

The number of Kiwis who own a smartphone has doubled in the past year, a TNS study has revealed. Twelve months ago 33% of NZers owned a smartphone, but the figure has now risen to 60%.

While the number of smartphone owners has doubled, the laptop remains the primary device used by New Zealanders for digital activity, with social networkers preferring to use their laptop instead of their mobile to tweet or change their Facebook status. The desktop computer is still the way most Kiwi men play computer games (most people in developed Asia play games on their mobiles).

Meanwhile, tablet ownership has nearly tripled over the course of a year, with 19% of NZers owning a tablet device.

More is at <http://www.scoop.co.nz/stories/BU1305/S00795/survey-reveals-smartphone-ownership-doubles-in-12-months.htm>

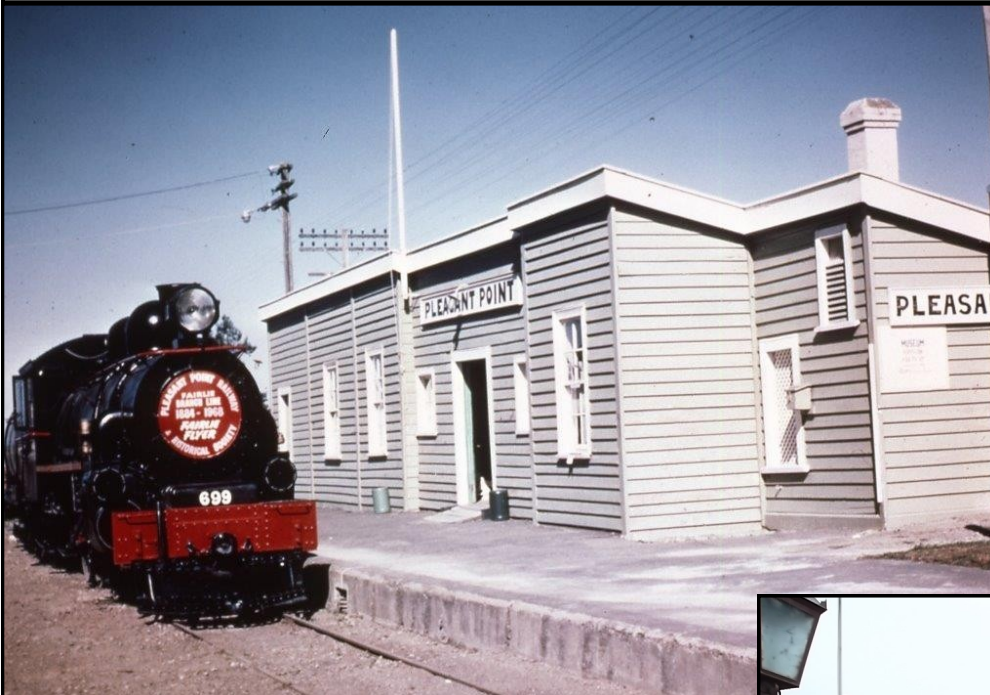
NEWS FROM OUR MEMBERS

WANGANUI STEAM & RAIL

Our host group for the 2014 FRONZ Conference are busy working on their projects and combine with the Wanganui Model Railway and Engineering Society for meetings and produce a joint newsletter. They have regular meetings and have recently hosted Lindsay Benbrook for an evening of historical video presentations. The model clubrooms are about to get a new roof and the modellers have been busy at a number of model shows in the first half of this year.

PLEASANT POINT MEMORIES

Brian Blanchard has sent these three photos of early days (1970) at Pleasant Point. Readers who enjoyed the shelter from the freezing rain on our Conference 2013 visit will appreciate the changes.



Left: Ab 699 just after it had arrived in Pleasant Point from Timaru when it was done up mainly by a small team - Bryan Blanchard, Stan McBain & Doug Posa - after work & weekends.

Below left: Putting the roof over the platform on the Pleasant Point station to protect Ab699. Gordon King, Stan McBain, Bryan Blanchard & Russell Paul.

Below right: The same location 3 June 2013. Photo Scott Osmond



Right: Ab699 being towed out to Pleasant Point from Timaru locomotive depot by DSC453 just past Washdyke. At Levels station the Dsc went to the back of the "train" and propelled 699 to Pleasant Point. Dsc crew, were 2 locomotive drivers I asked if they would do for the society after I had got permission to get it taken out. Drivers were Harry McKeever and George Turner. George was the driver of the lead Ab on the final excursion run to Fairlie from Timaru on 2/3/1968.



THE SQUARE TRAM SHELTER

Ferrymead Tram Tracts reports on the restoration of the Christchurch Square tram shelter now getting a new life at Ferrymead.
Photo: Barry Marchant



ANOTHER NEW TURNTABLE.—GLENBROOK

Soon there may be more turntables operating at heritage sites in New Zealand than on the "Big" Railway. Here we see earthworks for the turntable installation at Glenbrook. Photos Ben Jeffcoat.



**FRONZ CONFERENCE WANGANUI
30 MAY—2 JUNE 2014**

**JOURNAL IS FOR ALL OF YOUR MEMBERS. PLEASE
FORWARD IT TO ALL ON YOUR E-MAIL LISTS**

MEMBER'S CLASSIFIEDS

RAIL HARDWARE

Midland Railway Company have sourced manufacture of steel bedplates and fishplates and these are available for sale. Examples are pictured below.

Enquiries to Allan Campbell phone 027 211 3172 or e-mail allan@mrht.org.nz.

Photo: David Maciulaitis



LOCOMOTIVE PATTERNS

Steam Incorporated have a number of patterns that are surplus to requirements. Available are patterns for A, Aa, Bb, Wd, F, De, X, Ja[NBL], and Oc. Feel free to contact Steam Incorporated by e-mail and they can advise what they have.



Left: Proud hometown prizewinners. Ian Tibbles presents the Shantytown Steam School Locomotive Restoration Award at Conference to Harry Andrew and George King at conference.

Photo: David Maciulaitis

PICTURE OF THE MONTH



There could of course, only be one contender for the prize this month. Our official 2013 Conference group photo taken by David Maciulaitis outside the Camaru Opera House.

FRONZ JOURNAL # 123

WAS PUBLISHED ON 17 JUNE 2013

CONTENTS MAY BE REPUBLISHED WITH ACKNOWLEDGEMENT