



JOURNAL

**JAN 2018
ISSUE # 173**

PUBLISHED BY FEDERATION OF RAIL ORGANISATIONS NZ INC :

PLEASE SEND CONTRIBUTIONS TO EDITOR, SCOTT OSMOND, BY E-MAIL : scottosmond54@gmail.com

IN THIS ISSUE

FRONZ Conference 2018	1	Classifieds	6
FRONZ Web Site	1	Future Mainline Excursions	7
News From Our Members	2	Picture of the Month	8

FRONZ CONFERENCE 2018

A brief advance note on our Conference Plans for 2018.

We will be in Wellington where our host group will be Steam Incorporated. Our conference venue will be the West Plaza Hotel at 110 Wakefield St in the city. Selected so we are handy to the night life nearby for those that want to enjoy the social side of our time.

So far our plans include:

Friday 1 June: An afternoon visit to the Wheelwright Shop at Gladstone in the Wairarapa. Visitors can take a scheduled train from Wellington where we will have a coach transfer us to and from Carterton to Gladstone, followed by return train from Carterton.

Saturday 2 June: Conference sessions all day with a free evening.

Sunday 3 June: Morning conference session and in the afternoon we will travel by coach to visit some of our members sites (including host group Steam Incorporated) in the Kapiti area.

Monday 4 June (Queen's Birthday Holiday): Coach to the Hutt Valley where we will visit more member sites before returning to Wellington and the airport for visitors to fly home.

FRONZ WEB SITE

FRONZ has just launched our new updated web site. Our previous web site was developed by Stefan Van Vliet in conjunction with George King a few years ago. Stefan has helped support the site and we would like to thank him for his efforts over the years.

The new site still has the same address at <https://www.fronz.org.nz/>.

The FRONZ Executive decided that it was time for an update of the site and we engaged our Treasurer, Hugh McCracken, to design a new site with many new features that make it easier for us to manage, and hopefully users to navigate and obtain information about our members. Hugh showed the 2017 FRONZ Conference a preview of what was available. The new site will also make it easier at conference time to manage bookings.

For the technically minded the site uses Drupal and Bootstrap theme. Open-source software, well supported, with cloud hosting.

On that note it would be useful (and to your advantage) for groups to check their information. The site provides good promotional opportunities. Send through recent photos to improve your profile.

We're also needing recent photos of TV, film, movie charter/hires to help flesh out this. It is good to be able to illustrate what our industry can provide.

We will be adding new information to the site over time so please bear with us while we do so. We will be loading all the past FRONZ "Journals" that we can as well.

If you have any questions, suggestions, or information you would like added to the site use the contact details to send a message. The link to the contact is <https://www.fronz.org.nz/contact-us>.

**JOURNAL IS FOR ALL OF YOUR MEMBERS. PLEASE
FORWARD IT TO ALL ON YOUR E-MAIL LISTS**

NEWS FROM OUR MEMBERS

These items are obtained from numerous e-newsletters that our member groups publish. Members are welcome to submit these or any other information they would like to share with the wider rail and tramway heritage community by e-mailing to scottosmond54@gmail.com

MAINLINE STEAM

From December Newsletter

Christchurch Depot:

Progress on our AO overhaul has seen two of the cars with only minor touches to complete and AO25 is progressing nicely, however this carriage is proving to be the worst of the three that we have done thus far.

Our FM van has been stripped and work is progressing on converting this to a power/viewing deck/baggage vehicle for our South Island fleet.

A good number of fittings for Kb 968 have been cleaned and inspected, and once our last AO is completed we hope to put our efforts into 968 and progress to returning this locomotive to operational status.

Plimmerton Depot:

DJ 1228: Steady progress has been made on DJ 1228 with electrical and mechanical checks completed after several of the axle bearings were replaced. The locomotive was successfully fired up and run on 2 December, 2017 and moved under its own power again. Fire suppression equipment has been fitted and the team will now continue checking the rest of the locomotive and fitting the last of the items required for mainline certification.

DJ 1229: With all work complete on the locomotive the Heritage Technical Committee is due to endorse the locomotive where it will then be passed through to KiwiRail and NZTA for sign-off and final certification. All going well this locomotive should see mainline use in the first part of 2018.

Ab 663: All the axle boxes are now rebuilt and the first of the driving wheels now reinstalled. The second driving wheel set is due to be installed shortly and the third in the New Year once the work is complete on the new axle.

The cylinders and pistons will be checked and all bushes and pins inspected as the motion gear and rods are re-installed.

Beyer-Garrett 14A: Reassembly work continues on this locomotive with the cab and other fittings now re-profiled to meet the New Zealand loading gauge standard. Although time consuming and challenging the team are enjoying seeing the locomotive go back together.

Work is progressing on carriages AO 209, AO 117, and FM Van AG 32.



Auckland Depot:

Mercer depot site. We have acquired a good lot of track sets and fittings from the closed Huntly East coal mine. These are now on site and ready to lay once our site is filled. We need at least 60,000 cm of fill to the level of the NIMT track. There are plenty of opportunities for the fill with all the construction going on throughout Auckland. However, we are still waiting for KiwiRail to put in our turn-out. Once that is done, work can proceed with the fill. We are also planning to work on the former Newmarket signal box during the summer while the top is at ground level.

Ja1275 and the Bagnall did us proud at the recent "Thomas" day at the GVR. As Ja1250 (Dianna) is now out of commission, so we were able to substitute with Ja1275. The weather was great and the event was crowded out with visitors. It was an excellent weekend.

Ja1275 has also been in use on two trips south this year, in conjunction with GVR, one, to the Tangiwai Memorial service, (6-7 May, where Jb1240 was also used to bring up the Southern train) and to the weekend Steam-Fest at Otrohanga on 19 August. Hopefully, there may be another trip coming up sometime in the New Year.

WELLINGTON TRAMWAY MUSEUM

From Tramlines

Conservation of the body and chassis of Wellington's combination tram No.17 has reached an advanced stage at The Wheelwright Shop, Gladstone, Wairarapa. It is due back at the Museum for Easter 2018. *Photo (right) by Keith McGavin.*



Above No. 86 at Te Marua, north of Upper Hutt. Photo: Allan Neilson.

A Wellington 4-wheel electric tram body had been located. Further work has been done and we now know that this tram body was #86. An agreement that would allow WTM to deconstruct the building around and over the tram, recover the tram, and leave a clear site for the owners has been reached with the owner. We will have to demolish a concrete chimney and fire place before recovery of the tram can commence.



Above: An official photograph of tram No.44 or 45 in its final form – similar to No.86.

WAIMEA PLAINS RAILWAY

This turntable was relocated from Dunedin to Heriot and used there from 1910 to 1978. After being sold to a local farmer it was found and purchased by the Trust in 2002.

The Turntable has been relocated and will continue to be used by K92 at Waimea Plains Railway, Mandeville.

Mandeville Open Day & Steam Festival will be 24-25 Feb 2018.



REEFTON HISTORIC TRUST BOARD

Facebook post by Paul Thomas. 22 December 2017.

The Reefton turntable being lifted this morning! A very exciting step for the Reefton Historic Trust Board (RHTB) towards the turntable being installed in front of the engine shed! The shed can be seen in the background of the image below.

A BIG thank you to Reefton Crane & Construction team, Pete, Clive & Andrew for the lift. Graham Gollan in the mix from the RHTB, his input appreciated as well.

Again a BIG thank you to Chris Paice of KiwiRail for enabling the purchase and the relocation of the turntable to be possible. And a BIG thank you again to our funders, Grey Valley Lions, the Rail Heritage Trust of NZ, and the Blackadder Trust!

This step in the project is a great Christmas Present!



NATIONAL RAILWAY MUSEUM OF NEW ZEALAND

From December Newsletter and Facebook

Roundhouse Updates

As a result of some hard work by our Chairman Bruce Shalders we have been granted \$10,000 by the Christchurch City Council to "Re-Stage the NRM Building", the intention being to divide the building into more manageable and affordable portions for construction.

Bruce spent many hours on this application and met with Council staff a number of times. On another front this grant from the CCC is very important as it reflects support from them, support that is always asked about when applying for funds from other sources, especially Lotteries.

We can now state that our local council is supporting our objectives.

Some time back the turntable was completed but the legal aspects were not attended to. Thanks to diligent work by our Secretary - Michael Leefe, a Code of Compliance has now been issued by the Christchurch City Council.

Since we have gained this we are now able to work on getting the paperwork complete to utilize our Tracksets and Turntable for the First time! (without approval from the relevant authorities we are unable to place anything on our tracks.)

All our remaining ballast piles will be spread over the end of this Summer, and progress is happening in the background on the Stage Two building project which is the main Roundhouse Building itself.

2018 is starting to be an Exciting year for the Museum and we look forward to sharing our progress with you as the year rolls on!

The project is very much alive and got a full head of steam!

RIMUTAKA INCLINE RAILWAY

News and progress from the latest newsletter.

A replacement boiler has been sourced for steam locomotive Ab 745, which arrived at Maymorn on 13 October 2017, and immediately swapped onto the locomotive frames for storage inside the shed. We're grateful to Rimutaka Trust and the Community Trust of Wellington for funding the remaining purchase cost and transport of the boiler.

There's a lot of progress to report on at the railway, from concrete floors and steps within the shed, through to workshop linings, track improvements, work on our ballast wagon fleet, engine hood frame for diesel loco ORB #1, and fabrication of a regulator and new cabs for steam locomotives Wb 292 and 299.

During Summer 2017/2018 we're also planning on extending our mainline track out past the pedestrian crossing, to a point opposite the Metlink passenger station.

We thank Ben Calcott for the work put into the railway, stepping down as Chairperson mid-year. We congratulate and thank Iain Palmer on his appointment as Deputy Chairperson and Operations Manager, Ray Hampton to Rail Vehicle Manager, and Hugh McCracken as Chairperson.

We operate trains at Maymorn on the second Sunday of each month, 10am-4pm.



Replacement boiler for Ab745. The Trust purchased the boiler from NZRLS as-is-where is at Feilding earlier in 2017.

GLENBROOK VINTAGE RAILWAY

DBR Locomotives Restoration Appeal 2017



The Glenbrook Vintage Railway Charitable Trust Board invite donations for this appeal from members, supporters and the general public

We need your help to fund the restoration, refurbishment and return to mainline operational status of our newly purchased DBR locomotives 1254 & 1295.

The appeal is open ended, however it is intended to get one engine operable and registered to operate on the mainline in the short term whilst a full overhaul and refurb is completed on the other.

Glenbrook Vintage Railway and Railway Enthusiasts Society Chairman, Alan Verry, has announced that Tim Kerwin has been appointed to the newly created paid position of General Manager, Glenbrook Vintage Railway. This position marks a definitive change in the operation and management of GVR after 40 years of all-volunteer operation.



FRONZ members may recall Tim was the recipient of the FRONZ AON Young Achievers Award at the 2011 Annual FRONZ Conference.

Warwick Turner is acknowledged for doing the job on a voluntary basis recently and will retain the position of RES Committee Member on the GVR Trust Board. Tim will be best able to also work on the GVR return to mainline operations as well as ensuring GVR is maintained as a fully functioning and major heritage railway and use his thirteen years' experience with Kiwirail and Transdev to advantage in meeting all requirements of legislation.

Right: Tim accepting FRONZ AON Young Achievers Award in 2011



OAMARU STEAM & RAIL

The big news for December was undoubtedly the brief visit of D16 to our tracks. With the generous assistance of the Pleasant Point Museum and Railway, the Victorian-era steam locomotive returned to Oamaru's harbour for the first time in 55 years to star in an episode of the BBC documentary series Coast New Zealand, hosted by Scottish presenter Neil Oliver. Built by Nielson and Co of Glasgow in 1878, D16 worked at many locations - including Oamaru - until being sold to the New Zealand Refrigerating Company in 1918 for use at Pukeuri, where she served until the 1970s.

Filming began early on the 7th, with Neil Oliver and his small group of



helpers arriving well-armed with cameras, drones, and sound recording equipment. As well as filming the train, the episode will cover the breakwater and harbour. It is expected to be screened before the middle of next

PAHIATUA RAILCAR SOCIETY

RM31 had a successful run to New Plymouth and back over the weekend of 21, 22 January with local shuttles from New Plymouth to Lepperton and Inglewood. A very successful weekend although one local attraction, a certain mountain, kept itself hidden behind the clouds.



Left: Crossing the Waiwhakaiho River shot from water level. James Heremaia.

Below: Pahiatua railcar Society RM 31 and Waitara Railway Preservation Society DSC 2584 with its consist, pass each other at about 196.5 km post on the Marton–New Plymouth line, north of old Lepperton station and Yard. John Churchouse



Unfortunately, due to technical issues, PRS have had to cancel the events that were scheduled to take place on 4 February 2018 for the relaunch of RM5 Mahuhu. Photo: Doug Johnston.



CLASSIFIEDS

Pre-order Offer TO FRONZ organizations and their members

Port to Plains

The Story of the LYTTELTON RAILWAY TUNNEL

Written by David Welch, this new publication tells of New Zealand's first great engineering project – New Zealand's first railway network – the project that shaped a nation's history... Over 200 pages with 100-plus detailed and historical black & white and colour illustrations

Celebrating the 150th Anniversary of the Opening of the Lyttelton Railway Tunnel December 1867

**SPECIAL OFFER –
10% OFF RETAIL PRICE OF \$44.90**

\$40.40 + P&P (\$8.50 within NZ)

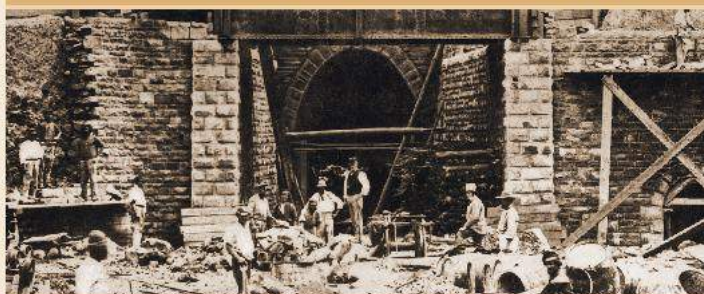
To pre-order, email sales@craigprint.co.nz with 'FRONZ' as reference to obtain the discounted price of \$40.40 (includes GST).

Book available in Bookshops this December

Special Offer finishes 18 December 2017

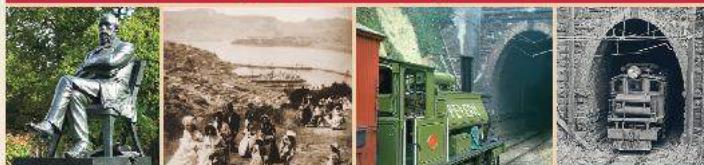
Printed by Craigs – www.craigprint.co.nz

Port to Plains OVER AND UNDER THE PORT HILLS



The Story of The Lyttelton Railway Tunnel

David Welch



FUTURE MAINLINE EXCURSIONS

This feature in Journal is a list of forthcoming mainline excursions by our members. Hopefully all are covered from newsletters and web sites but if any members have excursion plans please send them to Journal at scottosmond54@gmail.com.

Steam Incorporated

17 Feb	Deco Delights	Kapiti to Napier for Art Deco (diesel)
24 March	Mangaweka Express	Paekakariki to Taihape (steam)
22 April	River City Express	Paekakariki to Whanganui (steam)
13 May	Heartland Flyer	Paekakariki to Woodville (steam)

Marlborough Flyer

Readers looking to ride the new Marlborough Flyer, a joint arrangement between FRONZ members **Steam Incorporated** and **Pounamu Tourism**, should see their booking site at www.marlboroughflyer.co.nz for their regular summer excursions between Picton and Blenheim

Mainline Steam

25 February 2018. Tui Express. Plimmerton to Mangatainoka (Tui Brewery) return.

Gisborne City Vintage Railway

Gisborne to Muriwai—
 Saturday 17 February 2018
 Saturday 31 March 2018
 Sunday 1 April 2018
 Sunday 13 May 2018
 Saturday 2 June 2018
 Sunday 3 June 2018

Feilding & Districts Steam Rail Society Inc

4 March 2018. Feilding– Taumaranui return. (KR Diesel)

Pahiatua Railcar Society

14-15 Feb 2018—Art Deco Weekend

Dunedin Railways

Regular Taieri Gorge and North Line services

29 April to 12 May 2018 Silver Fern Railcar Christchurch to Invercargill and return.

No excursions currently advertised for:

Glenbrook Vintage Railway Scenic Rail

PICTURE OF THE MONTH



Mainline Steam had a successful weekend in Whanganui for the Vintage Weekend on 21, 22 January, with very positive feedback from the festival organiser, passenger's and general public. The locomotive Jb 1236 performed very well with thanks to the KiwiRail crew and Mainline Steam team. The photo was taken by Cameron Persson as the train worked hard climbing the Westmere Bank on one of the Kai Iwi shuttle trips over the weekend.

**FRONZ CONFERENCE WELLINGTON
1-4 JUNE 2018**

**FRONZ JOURNAL # 173
WAS PUBLISHED ON 28 JANUARY 2018
CONTENTS MAY BE REPUBLISHED WITH ACKNOWLEDGEMENT**