



JOURNAL

APR 2018
ISSUE # 176

PUBLISHED BY FEDERATION OF RAIL ORGANISATIONS NZ INC :

PLEASE SEND CONTRIBUTIONS TO EDITOR, SCOTT OSMOND, BY E-MAIL : scottosmond54@gmail.com

IN THIS ISSUE

FRONZ Conference 2018	1	News From Our Members	5
FRONZ Awards 2018	2	Classifieds	10
TrackSAFE Safety Leadership Award	3	"The Pantograph Punch"	10
Rail Safety Week 2018	3	Future Mainline Excursions	11
A&G Price Foundry	4	Picture of the Month	12

FRONZ CONFERENCE 2018

Booking for conference 2018 is available at www.fronz.org.nz/conferences. After 1 May the registration will be increased so get in soon.

Accommodation bookings at our venue, West Plaza Hotel at 110 Wakefield St are also available at www.fronz.org.nz/conferences/accommodation

There is an option to book ALL conference activities Saturday and Sunday or as individual elements.

When booking note that our Friday and Monday excursions and site visits must be booked separately.

Our confirmed plans include:

Friday 1 June: An afternoon visit to the Wheelwright Shop at Gladstone in the Wairarapa. Greg spoke at our last conference in Dunedin, now we have a chance to see his work. Visitors can take a scheduled train from Wellington at 1255 arriving Carterton 1414. We will have a coach transfer us to and from Carterton to Gladstone, followed by return train from Carterton. Carterton Station will be opened for a quick look inside. Return train leaves Carterton at 15.56 arriving Wellington 1717.

Friday evening conference registration begins at the West Plaza Hotel at 1700.

Saturday 2 June: Conference sessions all day with a free evening. Keynote Speaker is Peter Dunne, retired MP and cabinet minister who will entertain us with his political knowledge specifically on making submissions to government legislation. We will also have updates from NZTA Rail Section staff. We are awaiting confirmation on speakers from Ministry of Transport, and funding agencies. There will be a presentation on those all important Safety Cases, and an update from Kiwirail on their year.

Sunday 3 June: Morning conference session will be the FRONZ AGM and after other business there will be updates from The National Railway Museum and NZ Rail Heritage Trust. In the afternoon we will travel by coach to visit some of our members' sites: Mainline Steam Plimmerton depot, host group Steam Incorporated Paekakariki depot, and the Wellington Tramway Museum, all in the Kapiti area.

Monday 4 June: (Queen's Birthday Holiday): Coach to the Hutt Valley where we will visit more member sites. Our first stop will be the NZ Railway & Locomotive Society Archives at the Thomas McGavin building in Petone, then on to the Silver Stream Railway, Rimutaka Incline Heritage Railway (including lunch there) before returning to Wellington and the airport by 1500 for visitors to fly home.



STEAM
Incorporated
Paekakariki
New Zealand



RAIL HERITAGE
TRUST OF
NEW ZEALAND

**JOURNAL IS FOR ALL OF YOUR MEMBERS. PLEASE
FORWARD IT TO ALL ON YOUR E-MAIL LISTS**

FRONZ AWARDS 2018

See the two links below for this year's conference awards at Queen's Birthday.

The first link is the criteria for the awards (one of which includes a prize from KiwiRail to the tune of \$2000), the second link is for the NZTA award, which also comes with a \$2000 prize.

Also MOTAT have just agreed to support the prize for Steam Locomotive Restoration with a cash sum of \$1500 to the winner.

Please talk over with your members about any possible categories you may be eligible to enter. There's a lot of free money up for grabs so give it some thought.

Awards Criteria

<https://drive.google.com/open?id=0B1mKjj5KD5toU2RUdVdYQ3ctbDZjenZBcERVtGICQU5XY2Y4>

NZTA Tourist and Heritage Rail Safety Award

<https://drive.google.com/open?id=0B1mKjj5KD5toOS1HbF9iQjNWenVtUkMjMXlhMGdrY3NrbkRz>

Be aware, the deadlines are April 25 and 26, last chance to enter your project.

Any questions, refer to e-mail contact details in the files.

***** Update on Steam Locomotive Award. Now includes \$1500 from MOTAT Society



Federation of Rail Organisations of New Zealand

2018 Federation of Rail Organisations of New Zealand - Achievement Awards -

The following awards are available for presentation at the annual
Awards Dinner, Sunday 3 June 2018 at Wellington.

Award	Prize	Entries Close
Steam Locomotive Restoration Award	TBC	25 April 2018
KiwiRail Infrastructure Improvement Award	\$2,000 & Trophy	25 April 2018
Tramway Restoration Award	Certificate	25 April 2018
Carriage / Guards Van Restoration Award	Trophy & \$500 courtesy of Dunedin Railways	25 April 2018
Goods / Service Wagons Restoration Award	Certificate	25 April 2018
Z-Minitankers Award	\$500 voucher toward fuel courtesy of Z-Minitankers.	25 April 2018
AON Young Achievers Award	Up to \$1000 towards the costs of attending next year's Conference.	25 April 2018
Rail Heritage Trust Restoration Award	Plaque	25 April 2018
Submission Details		
NZTA Tourist & Heritage Rail Safety Award	\$2,000 & Plaque	26 April 2018

2018 Award Sponsors

DUNEDIN RAILWAYS
WORLD CLASS TRAIN TRIPS



RAIL HERITAGE TRUST
OF NEW ZEALAND

KiwiRail

AON



NZ TRANSPORT
AGENCY
WAKA KOTAHU

TRACKSAFE NZ SAFETY LEADERSHIP AWARD

Nominations are now open for the annual TrackSAFE NZ Safety Leadership Award. <http://www.tracksafe.co.nz/about/rail-safety-award> This award is designed to recognise significant leadership in railway safety in the New Zealand rail industry.

Applicants will be selected based on their contribution to safety through any of the following criteria:

- sustained contribution to railway safety over a significant period such that it positively influences rail safety in New Zealand
- exceptional measurable improvement in safety within an organisation
- leadership in promoting and encouraging safety values across New Zealand's rail industry
- significant leadership of safety for a railway project, activity or major event
- contribution of a safety innovation which has resulted in a sustainable rail safety improvement

Nominations **close on 11 May**, and the winner will be selected by the TrackSAFE NZ Board of Directors at their next **meeting on 31 May**. The award will be presented at the NZ Rail Conference Dinner on **Monday 14 June**.

Entry Process

Send a descriptive summary of your entry (up to 600 words) in pdf format to tracksafe@tracksafe.co.nz. The summary should include the key factors that have contributed towards demonstrating how the nominee meets the selection criteria. Nominations can occur at any time.

Nominations should be submitted by 11 May each year.

Terms and conditions

Nomination for this award is subject to the following terms and conditions:

- The judges' decision is final and no correspondence will be entered into.
- The judges undertake to observe the confidentiality of entries and to declare or avoid any possible conflict of interest.
- The judges reserve the right not to make an award where, in the judges' opinion, no entry of adequate standard has been received.
- Judges may, in exceptional circumstances, award more than one award per year.
- The judges may choose to make an award at a time which does not coincide with the NZ Rail Conference where they deem appropriate.

Megan Drayton

Foundation Manager

RAIL SAFETY WEEK 2018

Rail Safety Week this year will be held from 13 – 19 August, with a launch event in Auckland on the morning of Monday 13 August.

TrackSAFE NZ Foundation Manager Megan Drayton says the week is an opportunity for all organisations with involvement in rail to share safety messages about the risks around the rail network and the safe behaviours required to prevent harm.

"We're looking forward to another year of working with all rail operators, NZTA, territorial and regional councils and Police to spread the word about safety out there in our communities.

With an emphasis on rail in current transport policy and level crossings being included for the first time in the draft Government Policy Statement, we are encouraging any efforts to raise the profile of safety around railway tracks and trains.

Megan says there are a number of ways FRONZ members could be involved in Rail Safety Week:

- sharing posters and fliers in your communities;
- initiating your own media stories coverage based on any known issues in your region (Glenbrook do a great job at this!);
- teaming up with Police at high risk or busy pedestrian level crossings and engaging directly with the public (TrackSAFE can provide some merchandise)
- sharing messages and videos on social media - Facebook/Twitter etc;
- running your own Rail Safety Week themed events.
- If anyone has any other great ideas, we would welcome them as well.

Every year some FRONZ members go the extra mile to promote Rail Safety Week. "We're still in awe of Feilding Steam and their efforts to brand their water tanker with the 'Expect Trains' messaging".

The overall theme and design work for the 2018 campaign is still being developed – so keep an eye on the TrackSAFE NZ website for more information in the coming weeks.

A&G PRICE FOUNDRY SOLD AND TO BE RESTORED

From Stuff

The A&G Price foundry has sold, with more than 40 jobs likely to be created from the sale.

The business, which was established in Thames in 1871, went into liquidation in July last year, leaving its 100 employees without jobs.

It has now been sold to Auckland businessman Chris Reeve, the sole shareholder of A&G Price Ltd.

Reeve, 70, also owns the land and buildings, which he put up for sale last year but it didn't sell.

After the liquidation, a core staff of 27 were retained to complete work on hand at the engineering company, and Reeve says he expects that number to rise to more than 40.

"It's a new chapter for A&G Price and I hope it's a new 150 years. We want that culture to be restored," he said.

"I'm very proud of the guys who work in the foundry ... I applaud their skills and how many people rely on their products."

Reeve said he planned to be a hands-off owner, leaving the running of the business to Peter Yates, who has worked at the foundry for 24 years, and Ian Findlay.

"I've said to Peter and to Ian, run it like you own it, and I won't be involved much at all because I have other [commitments]," Reeve said.

"I want A&G Price to be successful and I want the guys who work there to be part of a team that make A&G Price proud and make themselves proud, and I want them to be rewarded for their success."

Reeve said he had been in talks with people from Singapore, who wanted more work completed by the foundry.

"Obviously there's been enough [work] for 27 for the liquidator to keep it open, hopefully there's enough work for more than 27 people."

"The plant is big enough that in my opinion that it will take more people, but we're only interested in can-do people, we don't want to take people on who are not going to be part of the team culture."

"We've got a chance and it's up to all of us to take the chance. Really, this is Peter Yates' to win or lose, and Ian Findlay's to win or lose and for the 27 or maybe soon to be 40-something staff to win or lose, and if they win, then I will definitely share the success with them."

Originally from Kaikohe, Northland, Reeve has owned the A&G Price buildings and land since 1995.

"It has been very kind to me over the years, they've never missed a day of rent so it was some surprise to me to hear that they'd lost money one year," he said.

"I'm a working man from way back ... so the people of A&G Price are my sort of people."

"After I was a shearer, I was a farmer, so I know what it's like to earn every dollar that you earn, so I empathise with the folks who work at A&G Price."

The purchase of the business was settled on April 3. Reeve said he planned to meet with staff at 7am on April 10.

Brothers Alfred and George Price opened the Thames foundry and engineering works in 1871. Business was thriving around the booming gold mining and Kauri logging industries on the Coromandel Peninsula.

In the late 1880s, the company started designing and building steam locomotives, supplying 298 steam and diesel locomotives for New Zealand Rail and others.

With the decline of the rail industry in the 1960s the company moved towards specialised heavy machining and technical refurbishment work.



NEWS FROM OUR MEMBERS

These items are obtained from numerous e-newsletters that our member groups publish. Members are welcome to submit these or any other information they would like to share with the wider rail and tramway heritage community by e-mailing to scottosmond54@gmail.com

PLEASANT POINT RAILWAY

Special Easter Events are held at several of our member sites.

Kiwi the Engine & Friends attracted 900 people to Pleasant Point Railway and Museum over Easter. *Photos Bryan Blanchard*



THREE FERRYMEAD GROUPS (CRS,DTG,NRM)

Canterbury Railway Society, in collaboration with the Diesel Traction Group and National Railway Museum, completed a highly successful Easter weekend's running; including a Railfans Day and the reintroduction to service of Di1102. Here Di1102 is captured on a night run by David Oakley.



WHANGAREI AT EASTER

No doubt the biggest rail event over Easter was the passenger rail shuttles from Whangarei to Kauri and Portland. Mainline Steam supplied locomotive Ja 1275, Glenbrook the carriages, and it was the first excursion using their main-line licence. The weekend was organised by a new group (and potential FRONZ member), Great Northern Railway. The big screen is a promotion by Tracksafe NZ. *Photos from JsnapsNZ.*



SILVER STREAM RAILWAY



Easter Sunday & Monday

Silver Stream Railway was open on both Sunday and Monday of Easter Weekend and offered a free chocolate Easter egg with every child ticket purchased. Easter Sunday featured locomotive L509, and on Monday railcar RM 30 was operating.

STEAM INCORPORATED

Our 2018 FRONZ conference host group, Steam Incorporated ran a steam excursion to Taihape and return on 24 March. The "Mangaweka Express" is at Feilding on the return journey running EARLY! *Photo Joel McLean.*



A full train ran to Wanganui also with Ja1271 on 22 May.



WELLINGTON TRAMWAY MUSEUM

From "Tramlines"

WTM have purchased, from the Wellington Cable Car Company Limited (WCCL) (the Company responsible for the maintenance of the recently closed Wellington trolleybus overhead network), their entire stock of unused and recovered overhead fittings, all now surplus to requirements.

This was a once in a life time opportunity to acquire new overhead fittings, not only for the Wellington Tramway Museum but for the heritage tram and trolleybus movement at large, at heavily reduced prices resulting from the closure of the Wellington City trolleybus network.

Passenger journeys during February totalled 967 as compared to last year's 1367.

About twenty members, spouses, and friends enjoyed a visit on to The Wheelwright Shop at Gladstone, Wairarapa, to inspect progress on the conservation of Wellington Combination tram No.17. Greg and Ali Lang are the proprietors of the business and Greg gave us a run down on the various processes used and the challenges presented.

Tram 17 progress has been steadily gathering pace over the last 12 months and is substantially complete apart from fittings and some internal panels.

Note: A visit to The Wheelwright Shop at Gladstone in the Wairarapa is an option at the FRONZ Conference this year.



Above: Tram 17 at Gladstone, 26 March. Roof canvasing complete. Exterior paint undercoats being applied. Photo courtesy Greg & Ali Lang, The Wheelwright Shop.



Left. Tram 86 arrives from its previous location as a sleep-out in Te Marua. 23 February. Photo. Mike Flinn

WAIRARAPA RAILWAY RESTORATION SOCIETY INC. (CARTERTON RAILWAY STATION)

Restoring Clareville Station Building

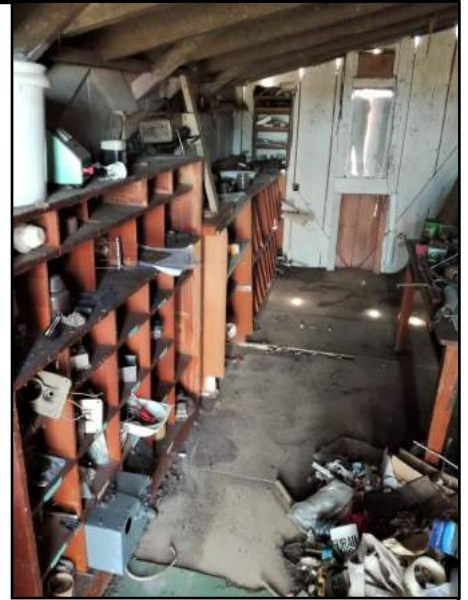
Late October last year, the Christensen family from Masterton donated the Clareville Station building to the Carterton Railway Museum (CRM). The building was in the Christensen's backyard. A change in circumstances meant the building had to be removed at short notice. The local members of the CRM working with the Rail Heritage Trust acted quickly and the building was moved by truck to the CRM on October 30 last year.

The Clareville Station was at 48 Chester Road, 2.8 kilometres along the Wairarapa line from Carterton Station towards Masterton Station. The station opened November 1, 1880 and was a flag stop. There was a loop siding with a capacity of 19 wagons and for a time a loading siding used by William Booth's timber mill. The station closed to freight traffic on September 16, 1956 and to passenger traffic November 30, 1970. The station building was sold to a private owner and shifted to a farm. Thirteen years later the building was sold to the Christensen family who moved it to their backyard.

Elizabeth Mead and Philip Sharp, two CRM members who live in Auckland, decided over Christmas to pay for the restoration of the station. Elizabeth said "The building is an important part of the Wairarapa's railway history and I did not want to see it deteriorate. Philip is a fifth-generation Mastertonian and I know he is particularly keen to see the station preserved."

The first step in the restoration was to remove all the items stored in the station, assess their value, and keep or dispose of. Work has now begun on putting the station on a permanent foundation, repairing a fascia board and the original main entrance door.

If anyone has information about the building that is not available on-line or in national archives, the CRM would appreciate hearing from you.



Photos: Below: The building being lifted from the Christensen's backyard (left) and the building being lowered on to a temporary base at the CRM. The brown building in the background is the Waingawa Station building. Above: The interior of the building with most of the items removed.



PLEASANT POINT MUSEUM & RAILWAY

From April Newsletter

We've enjoyed a very busy New Year, with Open Days very well patronised. The Tinwald Festival held on 10 December was a huge success – over 35 Stall Holders attended. Our annual Pea and Potato Fundraiser went well, despite the challenging weather. Huge thanks to the Farming Crew. Childrens Day was held on-site on 4 March – huge thanks to our Staff, with RM50 running 22 Trips in 4 hours, with a constant queue line stretching down the Platform.

We are thrilled to have Ja1260 back in action after passing inspection on Friday 23 March, a credit to all whom have assisted on this mammoth project.



Left: Another full load of passengers moves on to RM50 on Children's Day. How many of these kids – and their parents – had their first train ride? Right: Ja1260 back in steam after a 5-year overhaul.



TRAMWAY HISTORICAL SOCIETY

From Ferrymead TramTracts

Work on Hills Car 24 and Grip Car 103 continues. Dunedin trolleybus 79 has been moved to the paint booth to free up room for Brill 178 which has been returned from the city for repair work to be done on it. A funding application has been made to allow the purchase of materials for Kitson boiler repairs.

The Christchurch City Council is considering whether to extend the City Tramway down lower High Street in concert with the reconstruction works due to take place in this area. It would reduce the impact of said work considerably, and the question of the provision of a return loop, made more difficult by post-earthquake roading changes, is part of the discussion.

On March 28, Christchurch 'Brill' 178 was returned to Ferrymead for roof repairs to be carried out. As its Brill trucks were deemed unsuitable to be loaded by fork lift as Sydney 1808 was, it was instead loaded and unloaded by using a ramp and temporary rails. On arrival at Ferrymead, 178 was unloaded in the township and towed to the Tram Barns by Dunedin 22 (below), as its trolley poles and other roof equipment had already been re-moved prior to transport. Consequently, Dunedin trolley-bus 79 has been moved into the paint booth for completion of its repaint and overhaul to make space for 178 in Tram Barn 1. *Photo: David Maciulaitis.*



DUNEDIN LIGHT RAIL TRUST



As reported in Ferrymead Tram Tracts

Last month we reported that the Dunedin Light Rail Trust had begun construction of their new Stage One cable car display building at Mornington. As at 21 March, this was the scene at the building site—the rails were in place, the concrete floor slab had been poured, and everything was almost ready for the new building to go on top. Once the new Totalspan shed is completed sometime in the next few months, three ex-Dunedin cable cars will head south from Ferrymead (Roslyn 95, Roslyn 97 and Mornington trailer 111) to take up residence on site and hopefully generate support for the next stage—a working recreation of the Mornington line with a proper museum and car barn to be

built directly behind, and in replacement of, the display shed. *Photo: Neville Jemmett, courtesy Don McAra.*

NELSON RAILWAY SOCIETY

On February 9, Wf 403 was towed out onto the line by the DSA to trial the realignment of the line on the way out to Tui Station. One bend still a bit tight.



CLASSIFIEDS

BAY OF ISLANDS VINTAGE RAIL TRUST

The boiler on our main loco, Peckett, Gabriel, has finally called it a day and we are going through the process of having a new one made.

This is going to take most of the year, plus a bit, so we are contemplating hiring a steam engine, to keep our customers happy.

We are looking at hiring a steam engine, around 25-30 tons, capable of hauling three cars on a round trip of 10 kms, mainly flat, with odd bits of 1/90, very short.

Taking 45 minutes for the round trip, with 15 min break half way.

Must carry enough water for the round trip. Preferably fitted with working headlights and air brakes; but we would consider fitting lights and dynamo, W/house pump, air tank and No 4 valve, plus piping, to otherwise suitable engine. Probable length of hire 18 months.

It will only be driven and maintained by qualified and experienced steam personnel.

Please contact: Mike Bradshaw by email mikethsteam@hotmail.com, or phone 0223 807 459

KIWRAIL ASO/AO CARRIAGES AT MIDDLEMARCH

KiwiRail is calling for tenders for eight ASO/AO carriages, and is looking to hold an open day at Middlemarch at some time in April. The GETS reference number is 19591296. For further information, please contact Chris Paice, Procurement Manager, KiwiRail. Ph: 04 498 2045 Mob: 021 409 140 Email: Chris.Paice@kiwirail.co.nz

THE PANTOGRAPH PUNCH

Now for something completely different..... Beware it does have some "adult" content!

While surfing the web recently I stumbled across a web site entitled "[The Pantograph Punch](#)" with a rail related name but not much else rail related as it is a site dealing with various arts issues. However, I did spot this rather lengthy but curiously fascinating [essay](#) about rail in Auckland especially on the Western Line. So if you have a spare half hour and want to immerse yourself in some culture with a vague rail theme take a read.

For those without the time or inclination I did appreciate the segment of a poem reprinted below.

Michael O'Leary wrote in 1988 in a poem *Living in Auckland* set on the platform of the Western Line's Avondale Station just after he'd stepped out of the train.

*A railway is the most melancholy of transport modes
And when you are aboard
The motion is one of subtle love-making
As the train pulls out from the station you stepped down at
It is your lover leaving, rolling down the track*

And

*But I defend the suburban services
Saying romance is not confined to the Orient
Express
And Mount Albert is as important as Montmartre
If you live there.*

*Right: Fruitvale Station, looking toward
the city / Melissa Laing*



FUTURE MAINLINE EXCURSIONS

This feature in Journal is a list of forthcoming mainline excursions by our members. Hopefully all are covered from newsletters and web sites but if any members have excursion plans please send them to Journal at scottosmond54@gmail.com.

Glenbrook Vintage Railway Scenic Rail

26 May. Silver Fern. Auckland to Putaruru, Tokoroa.

Other planned trip dates. Details to be advised are:

14 July

11,12 August.

8 September.

13-28 October—South Island tour

Steam Incorporated Whanganui (steam)

13 May	Heartland Flyer	Paekakariki to Woodville (steam)
18 May	Main Trunk Night Limited (One Way)	Hamilton to Kapiti (diesel)
10 June	Kapiti Family Express	Paraparaumu Paekakariki shuttles (steam shuttles)
28 July	Spiral Snow Express	Kapiti to Taumaranui (diesel)
9 September	Daffodil Express	Wellington to Carterton (steam)
14 October	Heartland Flyer	Paekakariki to Woodville (steam)
17-23 October	South Island Rail Tour	
2 December	Christmas Grand Circle	(Diesel)
5 January 2019	Ekatahuna Express	(Steam)

More details of Steam Incorporated trips at <https://mailchi.mp/d045072a13af/rail-excursion-update>

Marlborough Flyer

Readers looking to ride the new Marlborough Flyer, a joint arrangement between FRONZ members **Steam Incorporated** and **Pounamu Tourism**, should see their booking site at www.marlboroughflyer.co.nz for their regular summer excursions between Picton and Blenheim. 2017-2018 season now ended but look for the next season from October 2018.

Mainline Steam

1 July	Tui Express, Plimmerton to the Tui Brewery for lunch.
25 August	Plimmerton to National Park for lunch at the Chateau Tongariro
25 November	Tui Express, Plimmerton to the Tui Brewery for lunch.

Gisborne City Vintage Railway

Gisborne to Muriwai—

Sunday 13 May 2018

Saturday 2 June 2018

Sunday 3 June 2018

Feilding & Districts Steam Rail Society Inc

6 May 2018	Feilding-National Park (Chateau lunch) (KR Diesel)
10 June 2018	Feilding-Masterton (Midwinter Christmas Dinner)

Dunedin Railways

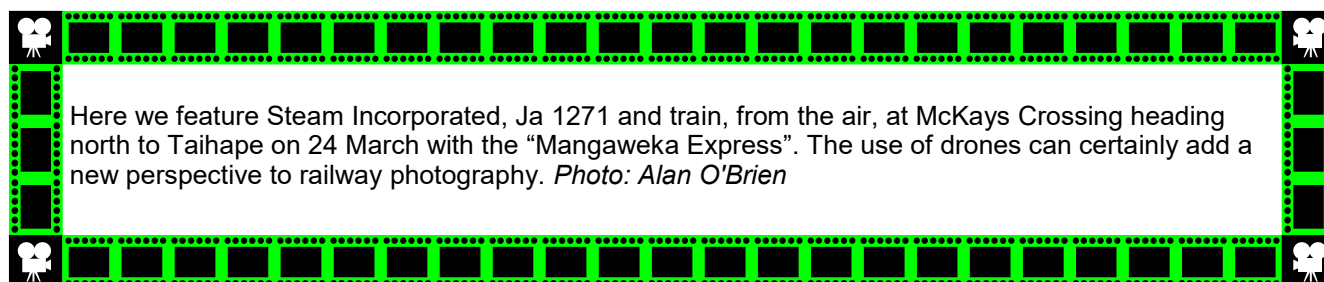
Regular Taieri Gorge and North Line services

12 May 2018 Silver Fern Railcar Christchurch to Invercargill and return.

No excursions currently advertised for:

Pahiatua Railcar Society

PICTURE OF THE MONTH



**FRONZ CONFERENCE WELLINGTON
1-4 JUNE 2018**

**FRONZ JOURNAL # 175
WAS PUBLISHED ON 24 APRIL 2018
CONTENTS MAY BE REPUBLISHED WITH ACKNOWLEDGEMENT**