



# JOURNAL

**MAR 2021  
ISSUE # 209**

**PUBLISHED BY FEDERATION OF RAIL ORGANISATIONS NZ INC :**

**PLEASE SEND CONTRIBUTIONS TO EDITOR, SCOTT OSMOND, BY E-MAIL : [scottosmond54@gmail.com](mailto:scottosmond54@gmail.com)**

## IN THIS ISSUE

FRONZ Update	1	Waka Kotahi Audit Tips	4
FRONZ Conference 2021	1	ATHRA News	5
FRONZ Training	1	News From Our Members	6
FRONZ AGM Notice	1	Classifieds	14
FRONZ Awards 2021	2	Future Mainline Excursions	15
		Picture of the Month	16

## FRONZ UPDATE

The FRONZ Executive is keen to improve our engagement with member groups. Groups are invited to put a subject forward to FRONZ to consider and offer the opportunity to give a short presentation to the FRONZ Executive via Zoom. Any groups interested are invited to submit their issue and spokesperson to the Secretary at [secretary@fronz.org.nz](mailto:secretary@fronz.org.nz). This will be discussed further at the FRONZ Conference.

At conference FRONZ is also looking to get member feedback on Environmental issues in particular the ongoing supply and issues relating to the burning of coal. The effects of environmental legislation would affect other interest groups such as traction engine clubs. FRONZ could ask for a mandate to work with those groups about what is going to happen going forward.

Executive Officer Margaret Gordon has put together a funding option for FRONZ insurances this year which has been agreed by the FRONZ Executive. In most cases this is a good outcome because it will save groups money. Groups will be contacted directly by Margaret regarding the new policy arrangements.

Mainline operating issues are on-going and FRONZ is regularly talking with operators and various agencies.

## FRONZ CONFERENCE 2021

The 2021 FRONZ Conference is being held Gisborne from 4-7 June 2021. Our host group is Gisborne City Vintage Rail.

We will be gathering on Friday evening 4 June 2020. Saturday 5 June will consist of Conference Presentations all day including local speakers and a session with Waka Kotahi (NZTA) plus the regular contributions from Kiwirail, Rail Heritage Trust, Tramway update, and others. On Sunday 6 June we will be taking a trip on the Gisborne City Vintage Rail, and a visit to the East Coast Museum of Technology on Monday morning 7 June.

Keep an eye on the FRONZ web site at <https://www.fronz.org.nz/conferences> for more details as they are available.

We expect registration to be available also [here](#) from 1 April.

## FRONZ TRAINING

Following a successful training session at Pleasant Point, another South Island operator has asked for a similar training day. It appears there is interest in FRONZ-led training around several subjects, such as shunting and hand signals, internal audits and managing Safety Systems, Communications, Air Brakes, dealing with threats to people and property.

We will be asking for further interest in these sessions which are a mix of practical as well as theoretical in nature. If there is interest shown from other parts of the country, we will certainly look at holding sessions in other areas. There will be reasonable costs only for travel and accommodation.

## FRONZ ANNUAL MEETING 2021

The Annual Meeting of the Federation of Rail Organisations of New Zealand, Inc, (Fronz) will be held at the **Emerald Hotel**, 13 Gladstone Road, Gisborne, on **Sunday, June 6, 2021** Commencing at **9am**.

**JOURNAL IS FOR ALL OF YOUR MEMBERS. PLEASE  
FORWARD IT TO ALL ON YOUR E-MAIL LISTS**

## FRONZ ACHIEVEMENT AWARDS 2021

The following awards are available for presentation at the Annual Awards Dinner, Sunday 6 June 2021 in Gisborne.

Full details of the Awards criteria and entry information will be circulated soon in a "Broadcast" to all FRONZ members. So if you have potential entries for consideration make a start on your submissions now.

*Note: This information is still being finalised and there may be some alterations to the final details.*

Award	Prize	Entries Close
Steam Locomotive Restoration Award	Trophy & \$1500 courtesy of MOTAT Society	25 April 2021
KiwiRail Infrastructure Improvement Award	Trophy & \$2,000 courtesy of KiwiRail	25 April 2021
Tramway Restoration Award	Certificate	25 April 2021
Carriage / Guards Van Restoration Award	Trophy & \$1000 courtesy of Poumanu Tourism Group	25 April 2021
Goods / Service Wagons Restoration Award	Certificate	25 April 2021
Z-Minitankers Award	\$500 voucher toward fuel courtesy of Z-Minitankers.	25 April 2021
AON Young Achievers Award	Up to \$1000 towards the costs of attending next year's Conference.	25 April 2021
Rail Heritage Trust Restoration Award	Certificate & Plaque	25 April 2021
NZTA Tourist & Heritage Rail Safety Award	\$2,000 & Plaque courtesy of NZTA	25 April 2021

## 2021 Award Sponsors



RAIL HERITAGE TRUST  
OF NEW ZEALAND



## 2021 TOURIST AND HERITAGE RAIL SAFETY AWARD

Has your organisation implemented a safety initiative lately?  
If so, we want to hear about it!

The NZ Transport Agency and FRONZ are calling for entries for the 2021 Tourist and Heritage Rail Safety Award.

This award aims to lift safety awareness and recognise excellence in safety innovation.

### WHO CAN ENTER?

All FRONZ tourist and heritage licensed rail participants

### WHAT YOU CAN WIN

- \$2000
- a certificate and plaque
- the right to mention the award in any advertising
- recognition for the award on the Transport Agency website
- a feature in the FRONZ journal.

### HOW TO ENTER

Complete the application form by **25 April 2021**.

Check the judging criteria carefully – provide plenty of information and attach relevant photos. Also check the terms and conditions.

The application form is available on the FRONZ website [www.fronz.org.nz](http://www.fronz.org.nz)

### IMPORTANT DATES

Applications close  
**25 April**

Winner announced  
**6 June**



## WAKA KOTAHI AUDIT TIPS

*Mike Anderson, Chairperson of the FRONZ Heritage Technical Committee has shared some tips to help with your audit processes. Examples shown are from Diesel Traction Group. FRONZ is happy to assist members with this.*

Make a list of the headings of areas of focus from your notification letter.

On your shared drive/intranet make a folder for the audit and inside this a folder for each heading.

Put supporting documents and examples into these folders.

Include recent 'self-review' rather than just swamping the auditors with all of your relevant documents.

Give 'examples of' rather than 'everything you have'. Be explicit with your document naming conventions.

Give your auditors a log-in to your shared drive/intranet well before audit day.

### Shared drives

Name



Committee



DTG Intranet



HTC Secretary Access



Personnel Files -Private



Waka Kotahi Access

Waka Kotahi Access > 2020 Waka Kotahi Audit ▾

Name ↑

Last modified

File size



Assurance and Audits - Track and Infrastructure

5 Oct 2020 Steve W...

—



Certification and Assurance

5 Oct 2020 Steve W...

—



COVID-19

18 Sept 2020 me

—



Investigation

5 Oct 2020 Steve W...

—



Locomotives and Rolling Stock

5 Oct 2020 Steve W...

—



Non-Routine Risk Assessments

12 Oct 2020 Steve ...

—



Responses

19 Oct 2020 Steve ...

—

Waka Kotahi Access > 2020 Waka Kotahi Audit > Certification and Assurance ▾

Name ↑

Last modified

File size



Copy of 772 Buffer SCW 040120.pdf

10 Oct 2020 me

589 KB



Copy of B Boulton De on heritage line spec form 23

10 Oct 2020 me

—



Copy of Di Loco DR Version Prep and Op Manual V2.4.pdf

10 Oct 2020 me

21 MB



Copy of DTG LTO Courses 2020.pptx

10 Oct 2020 me

3 MB



Copy of FM LTO Scope.pdf

10 Oct 2020 me

200 KB



Copy of Garters Network LTO 2020.pdf

10 Oct 2020 me

211 KB



Copy of Jim Drug Alcohol.pdf

10 Oct 2020 me

36 KB



Copy of Mechanical Skills Matrix.xlsx

10 Oct 2020 me

17 KB



Copy of Safety\_Critical\_Work\_Poster.pdf

10 Oct 2020 me

141 KB



Copy of Sponsor Verifier Statement 24 Aug 2019.pdf

10 Oct 2020 me

65 KB



## ASSOCIATION OF TOURIST & HERITAGE RAIL AUSTRALIA (ATHRA)

*Some interesting news from our colleagues across "The Ditch".*

### HEADS OF WORKPLACE SAFETY AUTHORITIES APPROVE CHANGES TO HIGH RISK WORK LICENCING REQUIREMENTS FOR STEAM LOCOMOTIVE OPERATIONS.

After 5 years hard work by ATHRA's Training & Assessment Working Group, it seems that ATHRA has finally been able to convince the Heads of Workplace Safety Authorities (HWSA) to major changes to the High Risk Work Licensing (HRWL) requirements for Steam Locomotive operations.

The HWSA meeting last week approved a letter to be sent to Safework Australia to approve the granting of an exemption from the need for all HRWLs relating to the operation of Steam Locomotives when these are operated under the Rail Safety National Law (which now effectively means ONRSR becomes the sole regulator in relation to Steam Locomotive operations)

The exemptions themselves will now be drafted and subject to the Safework Australia approval (maybe at their September meeting) then sent out to the state jurisdictions to be promulgated by way of Gazette.

There is not expected to be any major delay and the exemptions should be in place by the end of October 2020.

On behalf of ATHRA's Members we would like to extend a huge thanks to the working group for the enormous effort and persistence in trying to get this over the line. Special thanks also goes to Frank Hussey, Steve Deveson, and Graeme Hind for their hard work for the benefit of our members across Australia. We would also like to thank ONRSR for their support throughout the process.

Project leader Frank Hussey said, "After 5 years this has been a case of the destination being more satisfying than the journey." Wow, what a journey for Frank and the team. Well done gents.

### REFUSAL OF COAL MINE PLANS MEANS BRITISH STEAM RAILWAYS MAY LOOK TO RUSSIA TO STAY IN BUSINESS

Newcastle City Council has refused planning permission for a new surface coal mine at Dewley Hill.

The decision means an end to UK-based coal production, and has dashed the hopes of Britain's heritage railways, who need affordable coal to continue operating.

Steve Oates, Chief Executive of the Heritage Railway Association said 'The decision is a huge disappointment. We spoke at the planning committee meeting and we had argued a strong case. UK-produced coal generates a fraction of the CO2 emissions created by extracting and then shipping coal half-way round the world to the UK. And it costs less in money terms, too. Keeping Britain's heritage railways running with affordable locally-produced coal would secure the future of a sector which sits at the heart of the country's industrial and cultural heritage, and generates millions for the leisure and travel sector.'

Steam railway operators across the UK made representations to Newcastle's planners. So, too, did the National Traction Engines Trust, the Heritage Fuels Alliance, The Heritage Alliance and the Association of British transport and Engineering Museums. Strong support was provided by Sir Peter Hendy, Chairman of Network Rail, who said, 'Steam on the main line attracts tens of thousands of spectators, warming the market for our railway in general, and the two Science Museum Group museums in the North East, Locomotion at Shildon and the National Railway Museum at York attracts 750,000 visitors per year lured by the romance and operation of steam locomotives. With the remaining stocks of English coal, this should supply UK steam locomotives until early 2021. The financial burden loco operators and heritage railways would face in adapting their steam locomotive fleet to burn alternative fuels would be impossible to overcome. Approval of the Dewley Hill mine scheme would bring a reprieve to the nation's heritage steam locomotive operators, currently dependent on the dwindling availability of home-produced coal.'

Without domestically-produced coal, the heritage steam sector will have to find ways to import, store, handle and distribute the coal it needs. 'Maintaining consistent and reliable supplies of coal is difficult and expensive', said Oates. 'That burden will now fall on our members, whose finances have already been hard-hit by the COVID-19 pandemic.' He added, 'The inevitable increase in the cost of coal may well be too much for some of our members to bear.'



Existing stocks of English steam coal will last into early 2021, while coal supplies from Wales are currently expected to end in 2022.

Looking to the future, Steve Oates said, 'Naturally we will watch carefully whether the applicants choose to lodge an appeal. We're also awaiting the outcome of the Welsh Government's consultation on their draft coal policy. Meanwhile we now have no alternative but to press ahead with our work on developing a coal importing operation, while also supporting US research and development work on biocoal.'

This is a Press Release from Heritage Railway Association

## NEWS FROM OUR MEMBERS

These items are obtained from numerous e-newsletters that our member groups publish. Members are welcome to submit these or any other information they would like to share with the wider rail and tramway heritage community by e-mailing to [scottosmond54@gmail.com](mailto:scottosmond54@gmail.com)

### OCEAN BEACH RAILWAY

*From Facebook*

We have been very busy behind the scenes with fixing up things that have been in need of repair, need renewing and just in need of some TLC.

Below are a few pics of what we have been up to:

Repainted our mid-way station - Stadium Halt - now looks like a lovely flag-station on a country branch line - next we will install a name board. Replaced a buffer on our carriage A193 built in 1885. Next week will be tested and hopefully placed into service. Introduced a new uniform, to make us more uniform and professional. Started the formation work ago our #1 road to our carriage shed ... and said goodbye to the old mainline from the 1960's. Levelled up our roads to our workshop - now awaiting ballast. And more woodwork continues on the restoration of carriage A1254. Hopefully in time for our 60th.

Want to volunteer? Tell us what skills you have or want to offer ... we are a small progressive group of doers.



### TRAMWAY HISTORICAL SOCIETY

*From Facebook.*

Recently arrived in the tram barns is Dunedin Tram 11 that normally resides and runs in the city. It is having both body and mechanical repairs whilst at Ferryhead. As can be seen in the pictures, the truck has been dismantled. It is intended that there will be a wheel turn done. The body is in the spray booth and is having parts removed. One task to be undertaken is recanvassing the roof.



*Left: Tram 11 in the spray booth. Brian Fairbrass is removing fittings under the front. Right: 11's wheels awaiting a trip to the lathe and a truck frame.*





## WEKA PASS RAILWAY

Despite the mercury rising to an impressive 33 degrees even under the shade of the silver birch trees just downhill from Timpendean on the afternoon of the 24th of February 2021, track gang leader Gary Kelly stayed positive.

"Gee, that breeze is nice"

The Weka Pass Railway's track gang, comprised of about half a dozen committed volunteers who meet each Wednesday, work in rain or shine to help keep our 1881 built stretch of permanent way in safe working order. While Gary's hi-rail excavator and tamping head makes the job a lot easier than it was in days past, it's still hot, sweaty work.

"You don't have to go to the gym after a day on the track gang!"

Track gang volunteers are involved with a range of tasks - ranging from spot sleeper replacement and reballasting to maintaining the bridge and 62 culverts.

The Weka Pass Railway has just shy of 16 kilometres of mainline track and sidings to maintain, boasting somewhere in the region of 30,000 sleepers. The opening of the challenging line was the result of tens of thousands of hours or hard manual labour, and drill marks are still visible in many of the cutting walls, some up to 1.5 metres long.



## WELLINGTON TRAMWAY MUSEUM

*From "Tramlines".*

Fiducia 244, which has been part of MOTAT's stored fleet in Auckland since 1964, is to be moved to Queen Elizabeth Park and become part of WTM's fleet. It has made sense to combine 244's move to Wellington with Double-Saloon 207's impending move to Auckland. 207 is heading for bodywork repairs and roof replacement by Clinton Pearce's company, Tramworks Limited, based in Otahuhu.

Tram 244, unlike WTM's two out-of-service Fiducia trams 235 and 238, has been stored under cover for almost all of the 57 years since it left Wellington so apart from one end, which has been dismantled, the body is in sound condition.

The Museum was open, and trams operated daily throughout the period from 26th December 2020 until and including Wellington Anniversary Day January 25, 2021. Thereafter there was the "SKIDS" special charter on January 26th and then the final weekend operations on 30 and 31 January. So, trams operated on 34 days of the 37 days over this period.

Overall, 6,942 passenger journeys have been recorded from 1 July 2020 to 31 January 2021. This compares with 7,596 for the same period last year, a reduction this year to date of 654 (9%). However last year's figure includes all the GPT passengers. Weekday special charters (mostly GPT) are down this year by 1,039 – more than accounting for the reduction.

Council of Tramway Museums of Australasia (COTMA) is planning their, COVID delayed, conference in Ballarat, Victoria, Australia, for September 2021.

*Right: The "SKIDS" special charter at the Beach 26 January 2021. Photo: Rob Webb.*





## DUNEDIN RAILWAYS/PROJECT STEAM

*From Project Steam Middlemarch Facebook.*

While we wait patiently for details of new ownership/management to be announced Dunedin Railways ran a train to Middlemarch on 24 February. This was a small shunt to bring a loaded Zp and the Ur wagon with Project Steam's P107 tender bogies and pony truck.



*Dj1209 swings the bend past Spratts Creek bridge towards Sutton.*



*Above: Crossing one of the small bridges just prior to McHardys Road crossing.*

*Left: At last, the tender bogies and Pony Truck are reunited with P107.*

*Below: The crew takes a break to inspect the latest "Linesider" magazine. From the Left, Kerry Parry, Clark McCarthy, Gary Hodson, Chris Francis and John Mac-Donell.*





## OAMARU STEAM & RAIL

*From March Newsletter*

We carried 331 passengers in February.

Work continues on the rails east of the workshop. Many of the wagons that normally reside on these tracks have been moved to the Holmes Wharf siding to clear the area. The worst sections of track are being replaced completely, and new sleepers applied to other sections. A rail-mounted digger with lifting/tamping jaws sped up this task considerably.

The Fowler loco, which was a resident in the Oamaru Gardens for many years, has had its frame reunited with its wheels.

The compressor shed has been re-roofed.

The digger on the CW track maintenance wagon had its arm shortened to lower its overall height when the arm is folded. It can now move under low structures without a support wagon carrying the arm.

The TR's radiator is off for repair and its front buffer has just been removed.

Congratulations to Cooper, pictured right, who was certified as an Assistant Guard last month. It is a pleasure to have you as part of the team!



## MAINLINE STEAM HERITAGE TRUST

*From Facebook.*

Another step forward at Mercer. The contractors have virtually finished the construction access road into our site.

MLS is currently in negotiation with 2 major earth-moving contractors who are keen to work with MLS over the next 2-3 years to place all the required clean fill and prepare the site for building and laying track. Our project has significant appeal to these contractors now that all our consents are in place and signed off. The site has good all weather road access off the southern motorway and the opportunity for these contractors to back haul aggregate supplies back into Auckland from local quarries makes this an attractive proposition to all parties.



## PLEASANT POINT RAILWAY

*From "Talking Point".*

Our last steaming day on the 7<sup>th</sup> February, had 160 come and visit our railway museum.

The 1925, Ford Model T Replica Railcar has been operating daily since 27 December and its current season concludes on 28 February – with no overseas visitors coming our way, our tallies are down from what they would be.

The Society is still looking for a treasurer to help with our operations, on the financial side.

On 17 February, we had a visit from New Zealand members of the Ford Model T club, 33 Model T's and 35 members. They came to see and 27 had a ride on our 1925, Replica Ford Model T Rail Car. They were on a National Rally motor-ing round a number of places in New Zealand.

Easter is getting close and we hope to run again, our very popular "Kiwi the Engine and Friends " on the 3<sup>rd</sup>, 4<sup>th</sup> and 5<sup>th</sup> of April – starting at 10.30am to the last train at 4pm. Kiwi will be there giving out free chocolate eggs to the young children who visit us and the "Silly Old Station Master " will be making sure the train and Rail Car are running on time. There will be free Face Painting and Popcorn for the children again. Last year it was cancelled due to the Covid-19 Pandemic.

Our next popular Saturday night movie screening will be on 27 March, 7.30pm in our theatre at Keanes Crossing. The main movie to be screened is "a 1965 Colour one = "Von Ryan's Express ", starring Frank Sinatra and Trevor Howard. Set in Italy in World War 2. The first half will have the usual shorts, a News Reel, carton plus more.



## BUSH TRAMWAY CLUB

*From March Newsletter*

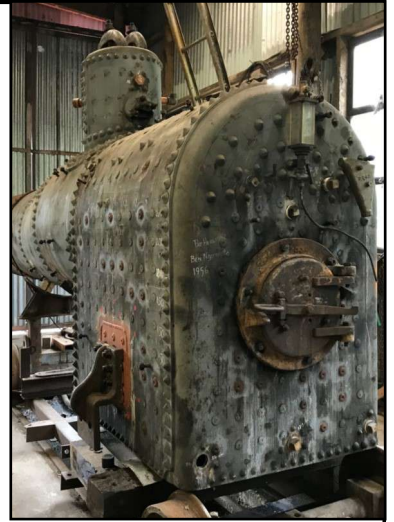


*The Climax boiler leaves for Te Kuiti. Photo: C. Mann.*

Climax 1650: After approx. 10 years work overhauling the boiler, it left the Junction recently to be reunited with the rest of the loco in Te Kuiti.

We have received the final report from Waka Kotahi NZTA after their assessment of BTC during our December open day.

They have made four non compliances and three recommendations. One of the recommendations is that safety critical operating members will require medical certificates. The committee are presently working on the type of medical certificate that we will require and the age it will apply from.



*The Climax boiler shortly before leaving Pukemiro Junction to be re-united with the chassis. Photo: E. Baptist.*



*Left: The Peckett, Meremere diesel & Climax boiler seen together in January 2021. Right: The Planet propels a load of sleepers up the main line whilst more stored sleepers and Tr436 are seen on the siding. Photos: J. Soffe.*

## WAITARA RAIL

*From Facebook*

Our friends from Whanganui brought their trollies for a weekend visit. There were rides from our Brixton depot to Waitara Town, and to Lepperton Yards to take ballast for the track extension there. A great mix of pleasure and work!





## BAY OF ISLANDS VINTAGE RAILWAY

*From Facebook.*

We are proud to announce an important milestone on our vintage railway project journey!! A call for Registrations of Interest for our expanded Kawakawa Station.

Our new building is to be constructed adjacent to the historic railway station and will provide training, office and public facilities along with an opportunity to share Kawakawa's (and indeed New Zealand's) rich cultural history.

### AN INVITATION TO REGISTER YOUR INTEREST

This Registration of Interest (ROI) is an invitation to local suitably qualified contractors to submit a Tender for Main Contractor for New Construction Works at Kawakawa Vintage Railway.

We would especially like to thank the Provincial Growth Fund, Pip Bolton from Avail Pacific, Bay of Islands Vintage Railway Volunteer and Team Leader Henry Nissan, Development Manager Wayne Hutchinson, and our dedicated BOIVRT Trustees for their commitment to get here. We would also like to acknowledge the design support from local artists Te Hemo Ata Henare and Lorraine King.

For further information, or to request the full suite of ROI documents, please contact by email Justine Lapper, Avail Pacific Ltd. [justine@avail.co.nz](mailto:justine@avail.co.nz)



## CANTERBURY RAILWAY SOCIETY

*From "Branchlines".*

We have secured an agreement with the Park to operate a steam service on the first Sunday of each month which took effect at the beginning of February. We also negotiated a new rate schedule for a range of passenger services which we can provide for them until the end of 2021. When not contracted by the Park we will continue to have the options of ticketing our own services to the public, or chartering our services to other organisations. We have also proposed to Park Management that "Steam Sunday" be renamed to "Heritage Sunday". In response to our request, they have begun a process of consulting with other member societies of Ferrymead Trust to obtain their views about a change of name for this event.



There were about 700 visitors to the Night Market on 6th February, and another 232 visitors on the following day for Steam Sunday. With many people away from Christchurch, and various other activities in the city occurring over the long weekend, these factors undoubtedly kept visitor numbers down on the Sunday. On the following Saturday (13th February) a big crowd was attracted to the Nostalgia Festival by eleven local acts on two stages, and a diverse range of food and beverages. Park Management has not yet received any attendance numbers from the event organisers, but based on newspaper reports it estimated there were between 5,500 and 6,500 people at the Festival. Should this estimate be reliable it would have been a considerable increase in attendance from the previous year. The Family Fun Day on 21st February attracted

about 1,000 visitors, many of whom enjoyed a trip on our newly refurbished electric multiple unit.

*Above: F13 & Di1102 - the two locomotives in service at the Nostalgia Festival. Right: Passengers board one of our trains at Moorhouse Station. The musicians, food and beverages attract a broader cross section of the public than do Steam Sundays. 13 February 2021. Photo: Kevin Prince.*



## DIESEL TRACTION GROUP

*From Facebook.*

### **\*\*DTG RAILFANS EVENING\*\***

Last year, we had to postpone the recommissioning of De 511 back into service with an evening of running goods trains. So to make up for it, we in conjunction with the

Canterbury Railway Society, are going to run all of our three locomotives based at Ferrymead on the evening of Easter Friday (April 2nd). Starting at 4:30pm and running through to 10pm, the first two hours will be De 511 on a goods train, plus a triple header, then two hours of Di 1102 & Dg 772 on the goods train, followed by a night triple header and photo shoots.

Tickets for the event are \$30 through the Canterbury Railway Society, all proceeds are to go to our group and help fundraise our projects.

Eftpos will be available on the afternoon or pay via the internet. Banking details are, BNZ - Canterbury Railway Society - 02-0800-0557894-00. Please put EE Railfan and your name.

We hope to all see you there!

## RAILWAY ENTHUSIASTS SOCIETY/ GLENBROOK VINTAGE RAILWAY

*From "YARN"*

GVR has made the decision to cancel the March event of our popular "Day out with Thomas". Whilst it was not the only factor in the decision, it was certainly a very probable one where no clarity could be seen if the country changed Levels. An event such as Thomas could only be held in Level one when people could mix in large numbers, and without that guarantee the financial risks with high fixed costs were just too great to contemplate.

GVR was all prepared to operate a charter train service using our equipment from Swanson to Helensville and return twice for the Helensville A & P Society. This event had been many months in the planning with the local Helensville MP Chris Penk, Helensville A & P Show, and ATEED (Auckland) all involved to secure the train and the marketing of it. It was a shock when Tim (GVR GM) took a call from Kiwirail contacts late on Friday afternoon a week before the trip to advise that Kiwirail could not give permission for the train charter to proceed. The rationale revolved around engineering signoff of the track for passenger services after its recent upgrade. Plans had been in place for the Wellington inspector to come up and complete the inspection when the first Level 3 lockdown for three days intervened. Thus, necessary approvals were not forthcoming, and we could not operate. To say this was a major tragedy understates the amount of work the Helensville A & P team had to do to contact all booked passengers, refund fares and change all booked marketing to reflect the changed circumstances. Hopefully, we can come back next year with all track approvals complete!

**RES Committee Changes:** The President Alan Verry, advised the Committee of his resignation from the position of President effective 31st March 2021. Bill Mutch, likewise advised the Committee of his forthcoming resignation from Secretary due in part to health issues. The Committee is now working through replacement personnel.

The "East by West" rail tour commencing 9th April has had an excellent response and that plans for the tour are now all completed.

The GVR team also took DBR1254 and the AG van to Taumarunui the other week in the first part of the exercise to ready the SA/

SD carriages for haulage back to Glenbrook. There is considerable work and boxes that need to be checked before any of the carriages turn a wheel such as checking and testing brake pipes and hoses, checking axles, wheels, couplings etc.



*The first couple of GVR equipment to some of the RES/GVR Carriages at Taumarunui.*



## GISBORNE CITY VINTAGE RAILWAY

*Here is the latest update from our 2021 FRONZ Conference Host Group.*

A fairly busy month with 3 public trips and 1 charter – all of them well received by our passengers. In addition to the routine operating maintenance on Wa165, work has continued on DSC2759. The battery boxes have been refitted and rust removal/treatment work is still being carried out in various areas. Attention has also turned to the driver's cab, with both of the driving seats being removed for reupholstering and to provide access to the control areas. Work has started on removing the "Remote Control" fittings (as we do not have the remote-control units) and returning the controls back to the standard configuration. This work includes such "small" details as the removal of the remote control air-line which operated the "look out everybody, I am approaching" warning horn.

The photos include a view looking into the cab area from the "B" side of DSC2759 showing some of the remedial work being undertaken.



## SOUTHERN STEAM TRAIN TRUST

*From Facebook*

The Southern Steam Train Trust (STTT) is holding open days to allow the public to view F150, a steam railway locomotive which is in the process of being restored to working order.

Saturday 27th & Sunday 28th March 10:00am – 3:00pm and located at 95 Inglewood Road (TurnTru Machining Ltd yard). Free Admission.



## VICTORIA BATTERY TRAMWAY SOCIETY



This time we're there on a day they are running, can thoroughly recommend the ride, the Museum and the underground Kilns tour. *Photos Mark Kreling.*



## CLASSIFIEDS

### TURNTABLE

Pounamu Travel is selling a 55ft turntable.

Originally from Balclutha, it is now in Blenheim.

Enquiries to Paul Jackson, [paul@pounamutourismgroup.com](mailto:paul@pounamutourismgroup.com). Mobile 027 256 1101



### SX CARRIAGES

Given the lack of interest from local and international rail heritage groups, through the tender process we weren't able to dispose of all of the carriages and the Railway Enthusiasts Society has put five of the SX Carriages on TradeMe for interested members of the public or individuals to acquire them.

Below is a link to the 5 carriages for sale being, SXV's 1697 and 1746, and SXC's 1741, 1742, 1743.

<https://www.trademe.co.nz/Browse/Listing.aspx?id=3022771148>

<https://www.trademe.co.nz/Browse/Listing.aspx?id=3022771747>

<https://www.trademe.co.nz/Browse/Listing.aspx?id=3022772306>

<https://www.trademe.co.nz/Browse/Listing.aspx?id=3022773653>

<https://www.trademe.co.nz/Browse/Listing.aspx?id=3022774437>

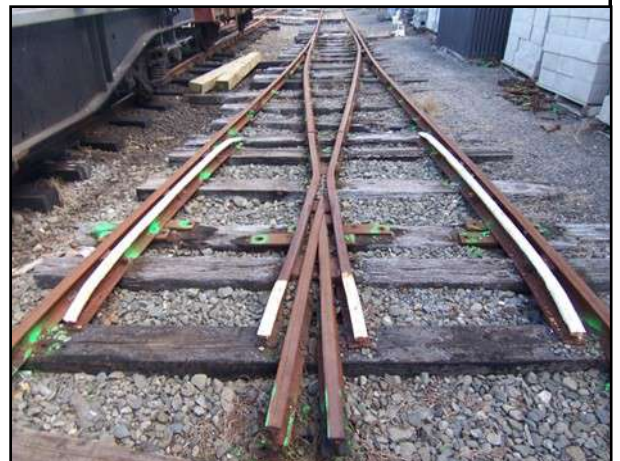
Could you please pass this on to your member organisations who may have interested members? It would be a shame to see these carriages scrapped.

Contact: **Sean Heenan**  
Mob: 022 657 6620



### OAMARU STEAM & RAIL

56lb Y-turnout in Oamaru available for sale or maybe trade for something we can use. It is in sound condition, has been disassembled and is ready for pickup/transport. Does not come with timber sleepers. This would suit either 3ft6 gauge or 2ft gauge. We hate to see it go to the scrap bin, all serious trades or offers considered! We also have 2 other turnouts available, one left hand and one right hand. Get in touch with GM Harry Andrew 027 277-4678 at Oamaru Steam & Rail for more details.





## FUTURE MAINLINE EXCURSIONS

This feature in Journal is a list of forthcoming mainline excursions by our members. Hopefully all are covered from newsletters and web sites but if any members have excursion plans please send them to Journal at [scottos-mond54@gmail.com](mailto:scottos-mond54@gmail.com).

### Glenbrook Vintage Railway

9-21 April 2021                      **"East N West"** North Island Rail Tour. Napier, New Plymouth and Central North Island.

In association with the above rail tour GVR are running several day trips:

10 April 2021	Ohakune to Te Kuiti return.
13 April 2021	Napier to Dannevirke return.
16 April 2021	Feilding to Taihape return.
16 April 2021	Palmerston North to Woodville return.
18 April 2021	New Plymouth to Hawera return.

### Steam Incorporated

24 April 2021	Anzac Express. Paekakariki to Waiouru return. Diesel.
30 May 2021	Kapiti Family Express. Paraparaumu to Paekakariki shuttles. Steam.
12 June 2021	Crafty Feilding. Paekakariki to Feilding return. Steam.
12 September 2021	Daffodil Express.

### Gisborne City Vintage Railway

Gisborne to Muriwai  
 3,4 April 2021  
 26 April 2021  
 9 May 2021  
 30 May 2021  
 5 June 2021  
 24 October 2021

### Feilding & Districts Steam Rail Society Inc

10 April 2021	Feilding to Wellington via Wairarapa return via Manawatu.
18 April 2021	Feilding to Taumaranui return.

All trips Kiwirail "Capital Connection" carriages and locomotives.

### Pahiatua Railcar Society

All trips on RM31. No current excursions advertised.

### Marlborough Flyer

In April and May the Marlborough Flyer is operating a South Island Rail Tour and various day trips centered on Blenheim Using Ab 608 and Steam Incorporated fleet. For details refer [www.marlboroughflyer.co.nz](http://www.marlboroughflyer.co.nz)

### Dunedin Railways

Dunedin Railways running some limited summer services to Hindon and Waitati each Sunday until 28 March 2021. For details go to [Dunedin Railways](http://Dunedin Railways).

The Otago Excursion Train Trust would love to express its support for Dunedin Railways and the way we are showing this, is by chartering the train to allow Dunedin people to explore further and wider by rail in our region.

DUNEDIN-OAMARU-DUNEDIN  
 Saturday 3 April 2021

# PICTURE OF THE MONTH



At Middlemarch on 24 February. Could this be true? Dj1209 freight to Clyde waits in the Middlemarch loop for Dj1227 with Goods Special from Ranfurly to pass...This opportunity shows the importance of keeping the short section past Middlemarch station. Actually, Dj1227 is moving the rake of carriages to exercise the brakes and bearings. *From Project Steam Middlemarch Facebook.*

\*\*\*\*\* FRONZ CONFERENCE GISBORNE \*\*\*\*\*  
\*\*\*\*\* 4—7 JUNE 2021 \*\*\*\*\*

**FRONZ JOURNAL # 209**  
**WAS PUBLISHED ON 28 MARCH 2021**  
CONTENTS MAY BE REPUBLISHED WITH ACKNOWLEDGEMENT