

FRONZ: JOURNAL

Federation of Rail Organisations of New Zealand Incorporated

It has been a busy month with groups running excursions and an in person FRONZ Executive meeting happening - along with the opportunity to catch up with some of our Wellington (and surrounding areas) members!

Climate Change was a huge discussion point for us, with a Zoom meeting following this up with member groups. Other points covered during the two day meeting were FRONZ Conference, updates on our engagement with Kiwirail, our purpose as FRONZ and where we want to see ourselves in the future, and an up and coming event - Rail Heritage Week. This was discussed during the members Zoom meeting and a fantastic number of groups expressed interest in participating.

IN THIS ISSUE:

- FRONZ Conference 2023
- News from around the Railways
- Upcoming Mainline Excursions



PICTURE OF THE MONTH

A 128 heading past the limestone formations of Frog and Seal rocks on the Weka Pass Railway. The locomotive is in its last year of service, before its boiler ticket expires at the end of July 2023

Photo: Bobby Boulton



CONFERENCE 2023 - BAY OF ISLANDS

Following a visit to Whangarei and the Bay of Islands to view different conference options, we can now advise that the 2023 FRONZ conference will be held at the Copthorne Hotel at Waitangi. This hotel is in a beautiful setting on the waterfront, with views across to Russell and out to the islands.

It has ideal conference facilities, and is close to Paihia allowing many accommodation options for anyone who does not wish to stay at the hotel. Whilst it is a 2km walk to the bars and restaurants in Paihia, we have been able to negotiate a courtesy coach that will operate each evening for anyone who wants to eat or drink away from the hotel.

We recommend that those of you who will be flying there, to book to fly into Kerikeri in the Bay of Islands. We appreciate this may be a long distance to come for many of our members so we are making your trip to Northland worthwhile by offering a pre-conference holiday before the conference (Tuesday to Thursday) as well as Friday being scheduled as a day to see historic Northland by visiting the Waitangi Treaty grounds and also sightseeing in Russell.

Conference registration will be Friday night as usual, with Saturday a business day as well as Sunday morning. We will be visiting both our Northland members the Bay of Islands Vintage Railway (who are our hosts) and the Whangarei Steam and Model Railway Club.

So put the dates in your diary – the 30th of May to the 5th of June for those of you joining us to discover Northland and the 2nd of June to the 5th of June for those of you who will only be attending the conference.

The next Journal will provide more information on the itinerary and costs of the pre-holiday options.

NEWS FROM AROUND THE RAILWAYS

WANGANUI MODEL RAILWAY AND ENGINEERING SOCIETY INC. & STEAMRAIL WANGANUI INC.

Wanganui's Mixed Traffic & Railscene, August - October 2022

Work on the club's layouts has continued to progress and Thursday nights have become increasingly popular with most involved focussing on improvements to the big layout. Allan G has completed the Tri-ang layout and has moved on to creating a small layout utilising the Monorail set donated by Les Fordyce's family and Paul R's skyscrapers. Allan has also managed to find a source of MDF packing sheets for the purpose of installing a ceiling in the extension.

-

With our open day on the Sunday of Queens Birthday Weekend, it has been a busy few months for members down at the shed, getting things ready. Unfortunately, we did have a bit of trouble the day before our open day. We were unable to start Price 149. So, this meant we were unable to move the locos outside to be viewed by the public and we also couldn't do the planned wagon change around with the Xp and the Yc's wagons. Price 149 ran on a 6-volt system. Very expensive on battery replacements and it's also been hard to restart once loco was warm. We have been talking for a while about converting it to 12-volt and this has now happened. Trevor started the removing of parts on 149, Hamish and Jmie gave the starter motor a tidy up, Hamish, Ewan (with the help from Keegan) replaced the original 6-volt generator and the coil with 12-volt ones (a couple of spares Hamish had ex his mini restoration) and a new battery was donated. The loco is now up and running again, but we do want to do a few operational tests before we look at moving the wagons. Hamish also wants to tidy up the wiring and add a temp gauge etc. Greg has started to clear a spot for the new donated Lathe (see photo) to go in. Hamish has also been tidying up a few of the electric Horns the club or private members have. Members have also been doing the regular jobs e.g. continuing to dismantle scrap, lawn mowing, painting out tagging and tree trimming. Blair's Tr 113 has even gotten some work done on it. Blair has mounted the new starter motor into the Tr and Keegan has been using the rattle gun removing rust from the rear headboard.



RAILWAY ENTHUSIASTS SOCIETY INC. / GLENBROOK VINTAGE RAILWAY

Yarn - August 2022

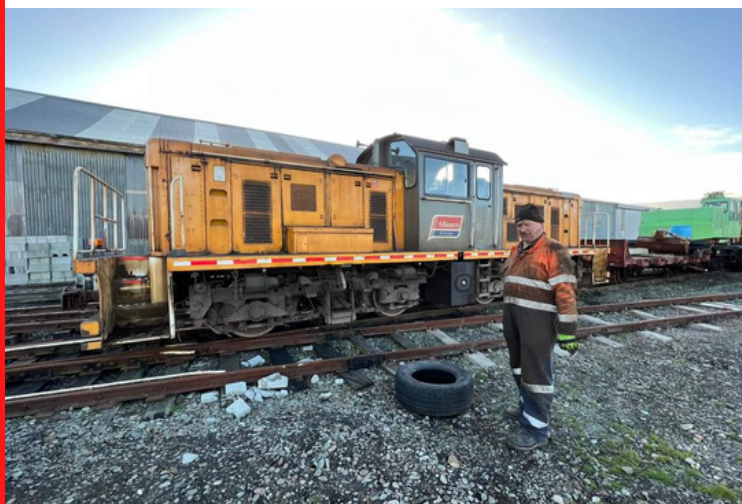
The 13 day East N' West Rail tour run by the Glenbrook Vintage Railway in July 2022 was a huge success, carrying a fantastic tight-knit group of tour passengers throughout the whole journey, and carrying well over 1000+ passengers on several side trips for local communities. Enjoy some of the fantastic photos captured from our crew including Aaron Wong, Corban Fray, Jack Still & Sean Heenan. Expect to see more information from the tour in the next edition of YARN too!



OAMARU STEAM AND RAIL

Oamaru Steam & Rail Digest - August 2022

- 372 passengers were carried in a pretty wet and miserable July.
- The Husky is now back in service.
- Work on the steel shed continues, with a lot of new exterior iron.
- Panel and paint work continues on TR 35's body panels.
- DSC 2421 arrived on Oamaru Steam and Rail's tracks from Alliance in Lorneville (north of Invercargill). The 400 hp twin-engined diesel-electric was built by NZR's Addington workshops in 1964 and has been at Lorneville since 2002. The shunter needs repairs and OSR will do the work.



Left: Oamaru TODAY, right: Oamaru Steam and Rail Digest

ADOPT A LOCO

Feilding Steam Rail

V-Class Underframe

Would you like to adopt a V Class underframe and pony truck? This is the last call for this relic of New Zealand railways.

If you'd like to find out more please contact harlan.s@steamrail.nz



GISBORNE CITY VINTAGE RAILWAY

Planning is underway for our 2022/2023 excursions. One of the first excursions may well be a Murder Mystery. More details will be published on our website (www.gcvr.org.nz) as they become available.

Meanwhile, our Winter maintenance programme is continuing. Wa165 passed the cold boiler inspection, so the fire bars and the eight new fire bricks have been fitted. Fortunately there are a couple of people here who are small enough to fit inside the fire box (thank you Geoff). A metal frame is used to support the brick on the left-hand side of the arch until the appropriate right-hand side brick can be positioned. This is only the second time that the fire bricks have been replaced since Wa165 was first steamed up in 1999 following the major restoration.

The photo that was included in the last issue was of the NEW fire bricks – not the old ones! Sorry about that!

The replacement brake hoses for DSC2759 have been fitted. Due to the size of the fittings that were used for the “Remote Control” system (which we have removed), 1250psi hose has to be fitted even though only 100psi pressure is required.

A complete check of all the lubricating points on the running gear has been carried out. Some of the lubricating points were blocked by ages-old grease and dirt, so they had to be cleaned out properly. In some places this entailed the removal of some linkages and pins – not what was originally planned!

A close inspection of the brakes revealed excess wear on one of the brake caliper assemblies. The assembly was dismantled and some replacement items had to be manufactured in the workshop. Further inspection has revealed that some of the other locating pins also need to be replaced – now work in progress.

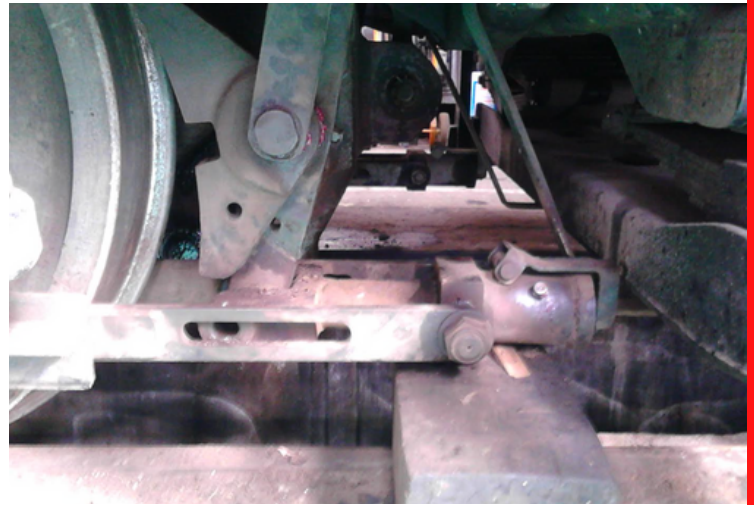
We have a 10,200 litre water tank on our service wagon to top up the water in the Wa165 side tanks before departing from Muriwai to return to Gisborne. Despite the water tank being used to carry only rain water or, occasionally treated and filtered town supply water, an inspection revealed a build-up of sludge in the output piping. Not a good idea for this sludge to end up in the boiler of Wa165! So, portions of the external piping and associated fittings have been replaced with new items.

GISBORNE CITY VINTAGE RAILWAY

A distortion problem with the PA system in one of the passenger carriages has been traced to a loose terminal on a junction block and also fixed.

The unexpected maintenance items have added to the workload of the small number of volunteers that we have available to carry out this work, but we anticipate being ready to start carrying passengers again at Labour Weekend.

See our website www.gcvr.org.nz for the latest updates and our more detailed newsletters.



Left: WA165 fitting the fire bricks, right: DSC2759 Brake Caliper Servicing. Photos: Graeme Scott

TRAMWAY HISTORICAL SOCIETY

Facebook

Friday the 19th of August was a great day for the society, We achieved the return to service of our MAN bus 612 after some serious repairs.

Bus 612 received a new COF Friday morning and was straight away used on a school sports charter. Anthony Holliday was at South Hagley Park and took the accompanying pictures.



THE WESTERN SPRINGS RAILWAY / MOTAT

The Western Springs Railway Facebook

We're all set for another great day of trains at MOTAT's Motions Road site! For lovers of all things steam and rail there's a lot to see as today is also MOTAT's tram live day. All the operational trams will be out including the 1891 Baldwin Steam Tram. And in the pumphouse all the steam engines are running, including the Mean Engine which will be operated at 11am and 1pm.

Those with keen eyes will note that the steam tram is carrying a bouquet of flowers today in memory of Ian Mison who passed away this week. Ian was a keen tramway volunteer since the earliest days of MOTAT, and it is as a result of his incredible efforts that No. 100 was returned to steam during the 1970s. At the time this was a massive task, and the fact that 100 is able to be seen in operating condition today is an enduring legacy of Ian's efforts. Ian is well known and highly regarded both at MOTAT and in the wider tram and rail communities- in addition to his massive contribution at MOTAT he had also been a driver at the Bay Of Islands Vintage Railway following his retirement. Ian will be sorely missed.



Photos: The Western Springs Railway Facebook

UPCOMING MAINLINE EXCURSIONS

Excursions are subject to Covid Restrictions- check directly with operators prior to travel

Glenbrook Vintage Railway

GVR have the 3-day Wellington Mini Steam Tour and the Rangitikei Scenic Daylight Tour both departing 24th September, the Main Trunk Voyager departing 25th September, monthly Discover Ruapehu Rail Tours and many other trips advertised on their website - www.gvr.org.nz/events/whats-on

Steam Incorporated

Steam Incorporated have the Eketahuna Express and Kapiti North Pole Express departing in December.

More information is available at- www.steaminc.org.nz/book-train-trip

Feilding and District Steam Rail Society Inc

Around the Block 3 - To Wellington is operating on the 9th of October, along with A Day In The Bay by Train 2022 on the 18th of September.

More information is available at- https://events.steamrail.org.nz/?page_id=4

Dunedin Railways

The Seaside, Inlander and Victorian are all operating on various dates between now & 27th November.

More information is available at-

<https://www.dunedinrailways.co.nz/journeys/dunedin-railways-winter-journeys>

Gisborne City Vintage Railway

SteamPunk Convention Carnage - Saturday 22nd October, departing 4.30pm.

More details available at- <https://www.gcvr.org.nz/bookings/>

Pahiatua Railcar Society

The Manawatu Gorge Shuttles are operating on the 29th of October, along with Round the Hills on the 30th of October.

More information is available at- <https://www.railcars.co.nz/excursions>

**FRONZ JOURNAL #226 WAS PUBLISHED 11
SEPTEMBER 2022.**

CONTENTS MAY BE REPUBLISHED WITH ACKNOWLEDGEMENT.