



# JOURNAL

JAN 2011  
ISSUE # 95

PUBLISHED BY FEDERATION OF RAIL ORGANISATIONS NZ INC : P O BOX 140, DUNEDIN 9054

PLEASE SEND CONTRIBUTIONS TO EDITOR BY E-MAIL : [secretary@fronz.org.nz](mailto:secretary@fronz.org.nz)

## IN THIS ISSUE

Congratulations To	1	Loco Seats—Free	1
Certification of Brake Testers	1	Eye Protection in the Rail Corridor	2
NZTA Symposiums	1	Sun Safety advice	3
DSC Motors For Sale	1	Photo Parade	3

## CONGRATULATIONS TO

Appointed as Members of the New Zealand Order of Merit in the New Years Honours:-

- Graham Charles Stewart, Wellington, for services to historical research and photography and
- Colin Francis Smith, Gore, for services to business

## CERTIFICATION OF SINGLE CAR BRAKE TESTERS

At the request of some operators a Task Instruction for testing and certifying single car brake testers has been developed and approved by the Heritage Technical Committee. While this is written to be appropriate for most simple tester designs, operators may need to modify the instruction to suit their own equipment.

The task instruction can be found at [http://fronz.org.nz/network/B32401\\_Certification\\_of\\_Brake\\_Testers.pdf](http://fronz.org.nz/network/B32401_Certification_of_Brake_Testers.pdf)

## NZTA SYMPOSIUMS

A reminder that if you want to have your say on topics and format for the NZTA symposiums contact the secretary at [secretary@fronz.org.nz](mailto:secretary@fronz.org.nz) asap.

Now is your opportunity to ask for those vexatious subjects that you can't quite get to grips with (eg risk management).

The feedback NZTA are looking for includes:-

- What topics do you want discussed?
- How many days, one or two?
- Concentrate the symposiums in a few larger centres (with better resources) or spread them out to get as many operators as possible?
- Have a comprehensive bash at two or three topics or once over lightly of many?

## DSC MOTORS FOR SALE

"For Sale 4 DSC Motors, complete. Available from Wellington Tramway Museum, McKays Crossing SH 1 Paekakariki. Price negotiable.

Please contact the Secretary,  
Henry Brittain,  
Wellington Tramway Museum,  
P O Box 2612 Wellington, 6140.

## FREE LOCO SEATS

As a result of upgrading the seats of its DJ locomotive fleet the Taieri Gorge Railway, Dunedin, has several of the original seats for disposal; free to a good home.

Contact  
Peter McCallum  
Engineering Manager  
[peterm@taieri.co.nz](mailto:peterm@taieri.co.nz)  
027 229 5626

## NEW KIWI RAIL EYE PROTECTION RULES

Below is a letter from KiwiRail spelling out new eye protection requirements for anyone entering their rail corridor or workshops. Perhaps operators may like to consider if the same rules may be appropriate to their own site.



20 January 2011

Peter McCallum  
FRONZ Secretary  
c/- Box 140  
**DUNEDIN 9054**

Dear Peter

### EYE PROTECTION IN THE RAIL CORRIDOR

KiwiRail Network currently "strongly encourage" eye protection to be worn at all times when outside on the rail corridor.

However, following a recent spate of eye injuries and to keep in-line with industry best practice, we plan to make wearing eye protection a requirement of working in the rail environment by May 2011.

This will affect everyone who enters the rail environment to work or visit a worksite, whether as a visitor, a worker or a contractor.

Eye protection is defined as protective gear for the eyes, which comes in many types depending upon the threat that is to be reduced. This means that during some operations a greater form of eye protection, other than glasses, might be required.

Following an audit of KiwiRail Networks current supply of eye protection, the following eye protection options have been selected as best suiting our business and safety needs.

- Uvex, super fit
- Bolle, Sidewinder
- Bolle, Prism

These options will be made available to KiwiRail employees in clear, tinted and yellow lenses. Clear lenses are used in all work environments, tinted used to reduce exposure to glare and yellow lenses are an option for working in dark environments i.e. night, early morning, fog, tunnels etc.

These products are being supplied by Protector Safety Ltd.

Planning safety into our work is still the most effective form of protection; however the wearing of safety glasses as a 'last line of defence' is sensible.

Kind regards

Robin Nicole  
HR and HSE Manager, KiwiRail Network

I wanted to invent an engine that could run for ever. I could have developed a new train, had I stayed in the railway. It would have looked like the AK-47 though.

Mikhail Kalashnikov

## NEW SUN SAFETY ADVICE FOR OUTDOOR WORKERS

Dept of Labour; 4 January 2011

Updated advice has been issued for outdoor workers with specific information on how to protect themselves from ultra-violet (UV) light, in time for the height of the summer.

The fact sheet sets out simple steps workers can take to protect themselves from UV rays and it also provides information about health monitoring for employers and their staff.

“New Zealand has one of the highest rates of melanoma in the world and people who work outdoors have a high risk of developing skin cancers,” says Dr Geraint Emrys, the Department’s Chief Adviser Health and Safety.

“This information provides advice on how to identify the different forms of skin cancer and how to look for early warning signs of an unusual growth.

“As we all know the greatest risk of being harmed takes place during late morning and early afternoon in the summer months - a time when many outdoor workers are at their busiest.

“As well as taking steps to protect themselves, outdoor workers should make a conscious effort to monitor their health and their skin every few months. More than 90 per cent of cases of skin cancer can be cured if the disease is caught early.

“Employers have a responsibility to take all practicable steps to protect their employees – this means they should be reminding their workers who spend long periods outside about sun protection.”

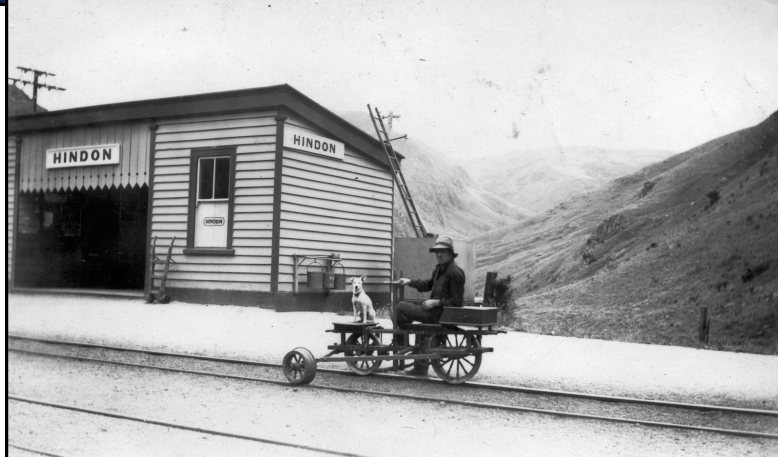
The fact sheet can be found at <http://www.osh.govt.nz/publications/factsheets/skin-cancer/01.html>



Above left—Trying to avoid the camera are the Diesel Traction Group's Jim Garters, Pete and Steve Weir, and Mike Anderson chatting to the CRS's Peter Jenkinson (second from right). 18/12/10. Photo: Nigel Hogg

Above right—The ex Auckland 70' turntable at the National Rail Museum, Christchurch. A tender has been accepted for sandblasting the structure. Photo: NRM Newsletter

Right—Signal Maintainer Dave Fricker at Hindon c late 1950's. Photo: Tony Fricker collection.



**FRONZ 'JOURNAL # 95**  
**WAS PUBLISHED ON 26 JANUARY 2011**  
 CONTENTS MAY BE REPUBLISHED WITH ACKNOWLEDGEMENT