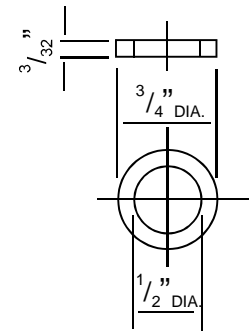


NOTE: LEATHER WASHER TO BE TIGHT FIT IN THREAD IN ORDER TO HOLD WASHER IN POSITION.

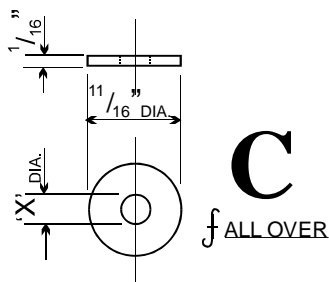


B

SECTION THROUGH CENTRE SHOWING LEATHER AND ORIFICE WASHERS IN PLACE

A

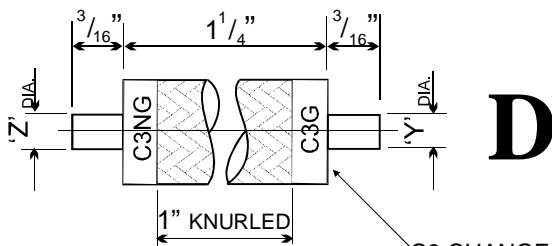
TO SUIT 5/8" DIA. SPANNER



C

ORIFICES TO BE REAMED WITHIN LIMITS OF ± .0015

MARK	VEHICLE OR COMPRESSOR	SIZE OF ORIFICE "X"
C3	RM, E13C	3/64"
C4	RM, 4E26	1/16"
C5	DSC, DSA, DSB, CATERPILLAR, TR HITACHI	5/64"
C7	TR (EXCEPT HITACHI), DS, DSA DREWERY	7/64"
C9	DE, EC, ED, EW	9/64"
C10	EO	5/32"
C11	8" X 8 1/2" STEAM	11/64"
C13	10" X 10" STEAM	13/64"
C14	10" X 10 5/8" STEAM	7/32"
C16	7" X COMPOUND STEAM, DF, DG, DH	1/4"
C18	DA, DB, DI	9/32"



D

GAUGE TO BE STAMPED NG & G AND GAUGE NUMBER

C3 CHANGES ACCORDING TO GAUGE NUMBER

NOTE
GAUGE TO BE CASE-HARDENED AND GROUND

GAUGE	'Z' DIA	'Y' DIA
C3	.0483	.0453
C4	.064	.061
C5	.0796	.0766
C7	.1105	.1075
C9	.1421	.1391
C10	.1577	.1547
C11	.1733	.1703
C13	.2046	.2016
C14	.2202	.2172
C16	.2515	.2485
C18	.2827	.2797
	All 'Z' values +0000 -0003	All 'Y' values -0000 +0003

**AIR END TEST. ORIFICE NUT
AIR COMPRESSORS**

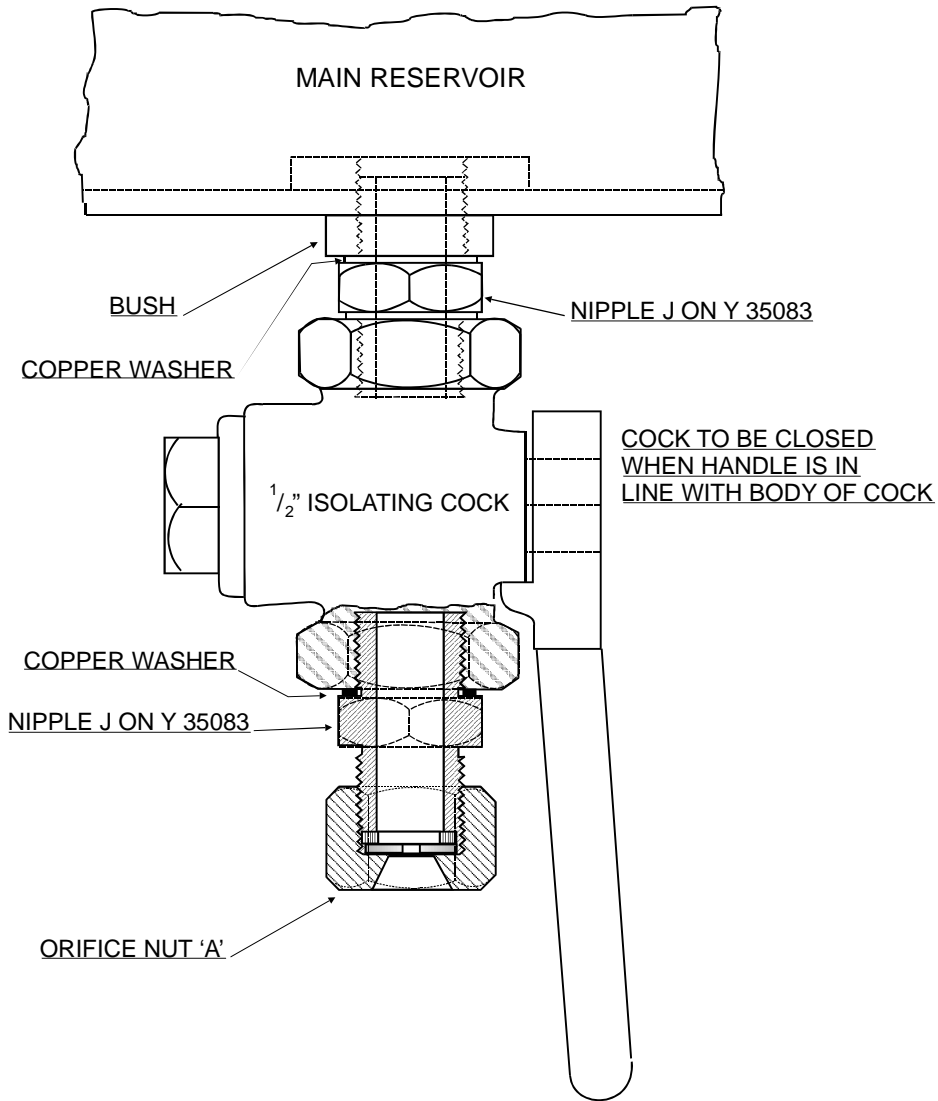
REDRAWN FROM NZR PLAN

Y21170

SCALE: FULL SIZE

DATE 18.3.66

PAGE 1 OF 2



VIEW SHOWING TYPICAL ASSEMBLY OF COCK ON RESERVOIR

D	ORIFICE GAUGE	CLASS 'A' STEEL
C	ORIFICE WASHER (SEE TABLE)	SPRING STEEL
B	LEATHER WASHER	LEATHER *
A	ORIFICE NUT	BRASS
MARK	DESCRIPTION	MATERIAL
<u>AIR END TEST. ORIFICE NUT</u> <u>AIR COMPRESSORS</u>		
REDRAWN FROM NZR PLAN Y21170		
SCALE: FULL SIZE		DATE 18.3.66
PAGE 2 OF 2		